



SCR

Signaller Desk Setup Guide

Version 2.0.1

Authors

[SM] thestargateking

[SM] SpaceIDragon

[SM] Stigon_o

Approver

[OD] GameZotto

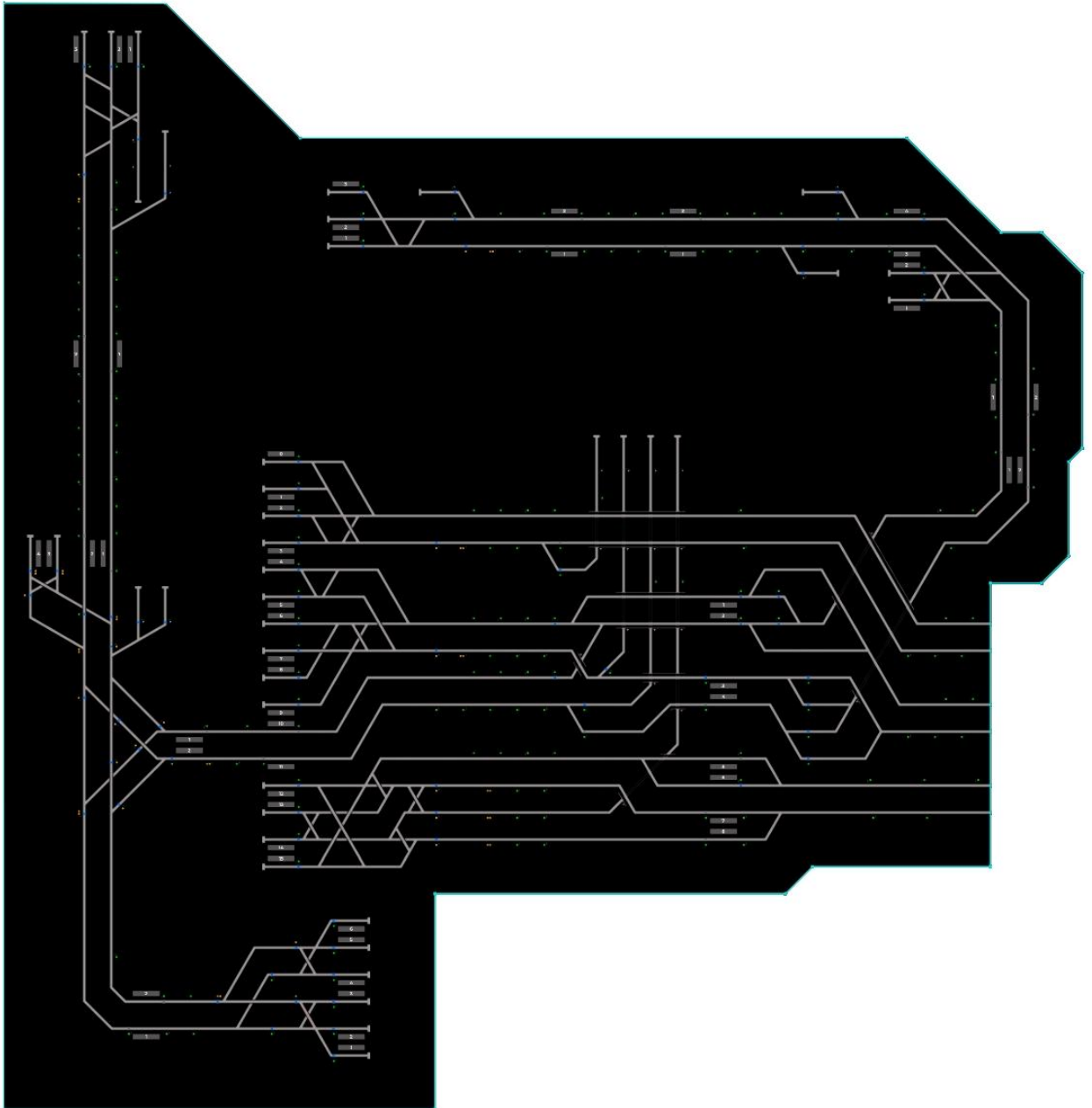
Issued

25/10/2024



Zone	Located	Coverage
A	Stepford ROC	Stepford City & Whitefield Branch
B	Beaulieu Park	St Helens Bridge <> Coxly/Beaulieu Park
C	Airport Central ROC	Stepford Airport Area (inc. Airport West)
D	Stepford ROC	Morganstown <> Leighton West
E	Llyn-by-the-Sea	Edgemead <> Llyn-by-the-Sea
F	Benton Signal Box	Benton & WL (excl. MGT. AW <> Esterfield)
G	Stepford ROC	James Street <> Esterfield
H	Rayleigh Bay	Rayleigh Bay Branch



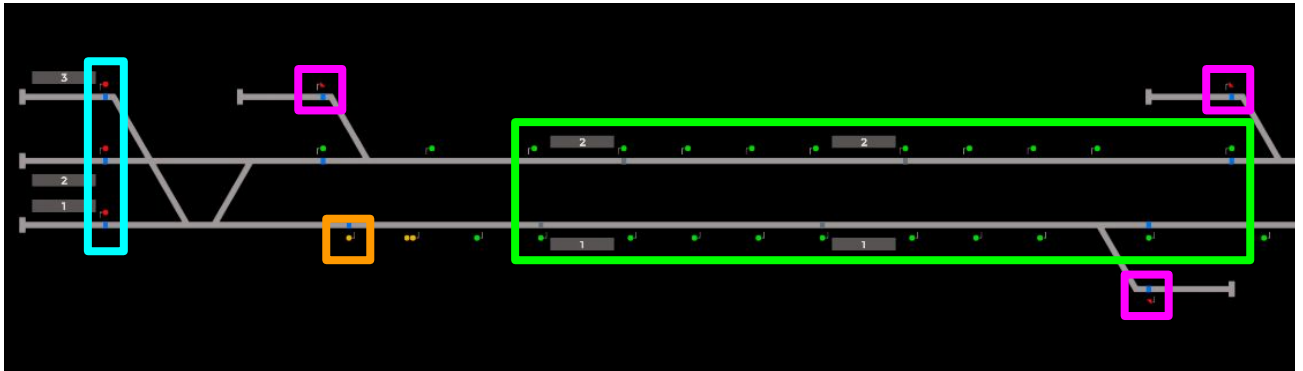


Zone A controls the major area of the Stepford Zone, as well as the Willowfield and Whitefield lines. This desk can be split into 6 Sections:

- **Whitefield <> Woodhead Lane Depot**
- **Stepford UFC and High Street**
- **Stepford East**
- **Stepford Central and Beechley**
- **Stepford Victoria and Financial Quarter**
- **Hemdon Park and Willowfield**



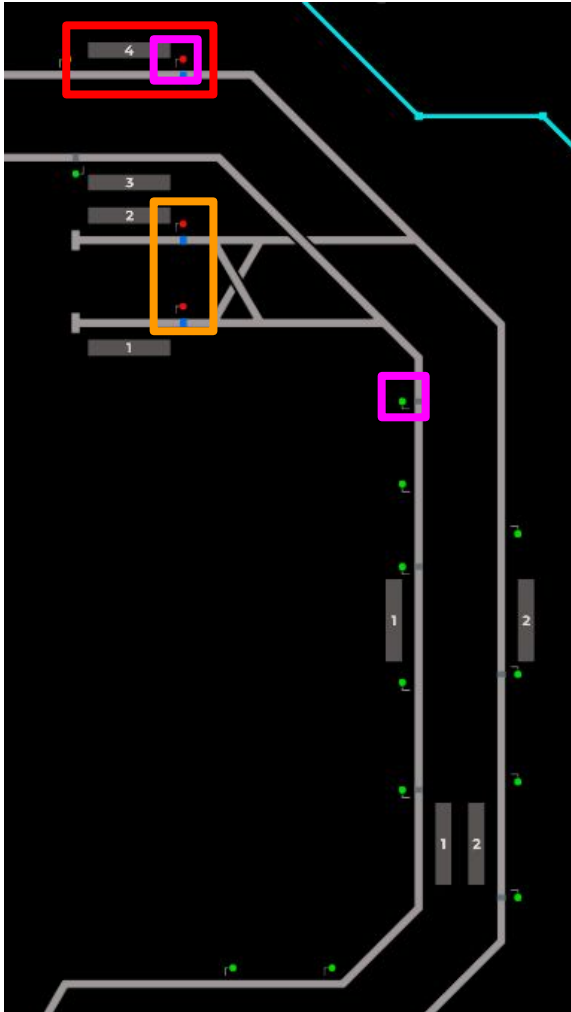
Section 1 – Whitefield <> Woodhead Lane Depot



1. Since Whitefield is a terminating station, **set the signals** to Danger.
 - o **Note:** Trains can enter Platform 1 whilst a train is leaving Platform 2 or 3.
2. **This signal** should be set to Danger whenever a train is about to leave Whitefield.
3. Keep **Houghton Rake and Woodhead Lane** signals to Proceed.
4. Leave the **mainline signals Proceed**.
5. **Siding and Depot signals must be set to Danger.** The mainline signal must be set to Danger before letting depot trains out.



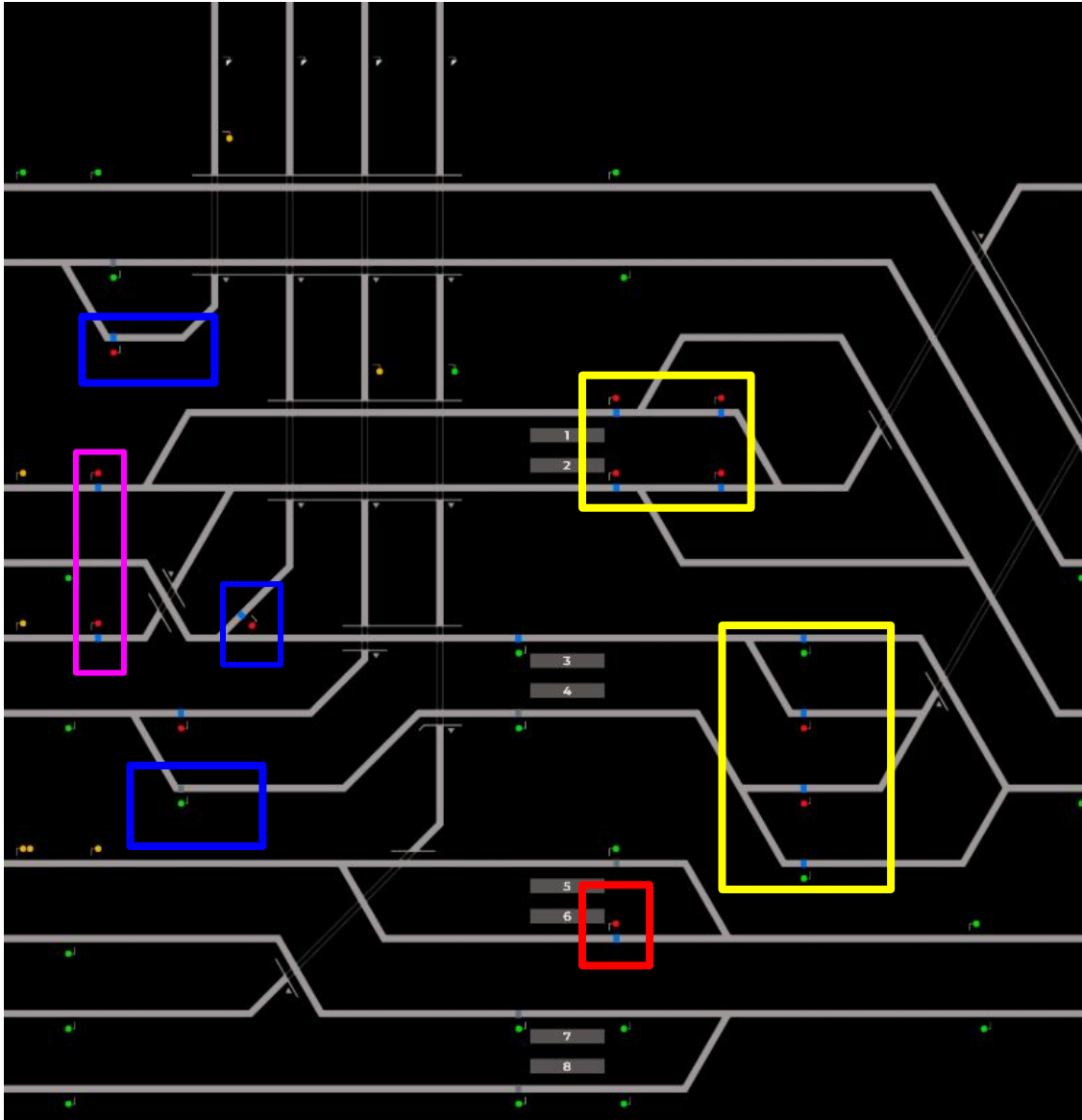
Section 2 – Stepford UFC and High Street



1. Set the **terminating platforms at Stepford UFC** to Danger.
 - o **Remember** that, just like with Whitefield, the platforms 1 and 2 signals are conflicting, which means only one signal can be Proceed at any given time.
 - o **Note:** A train may leave Platform 2 at UFC whilst a train is arriving at Platform 1.
2. When trains are about to leave **Stepford UFC Platform 1 and 2**, **these signals** should be set to Danger.
3. **Stepford UFC Platform 4** should also be set to Danger, this is because trains terminate at Stepford UFC and Whitefield equally and there aren't enough blocks between the depot and station to avoid an adverse signal change when switching to give the terminating platforms priority.



Section 3 – Stepford East

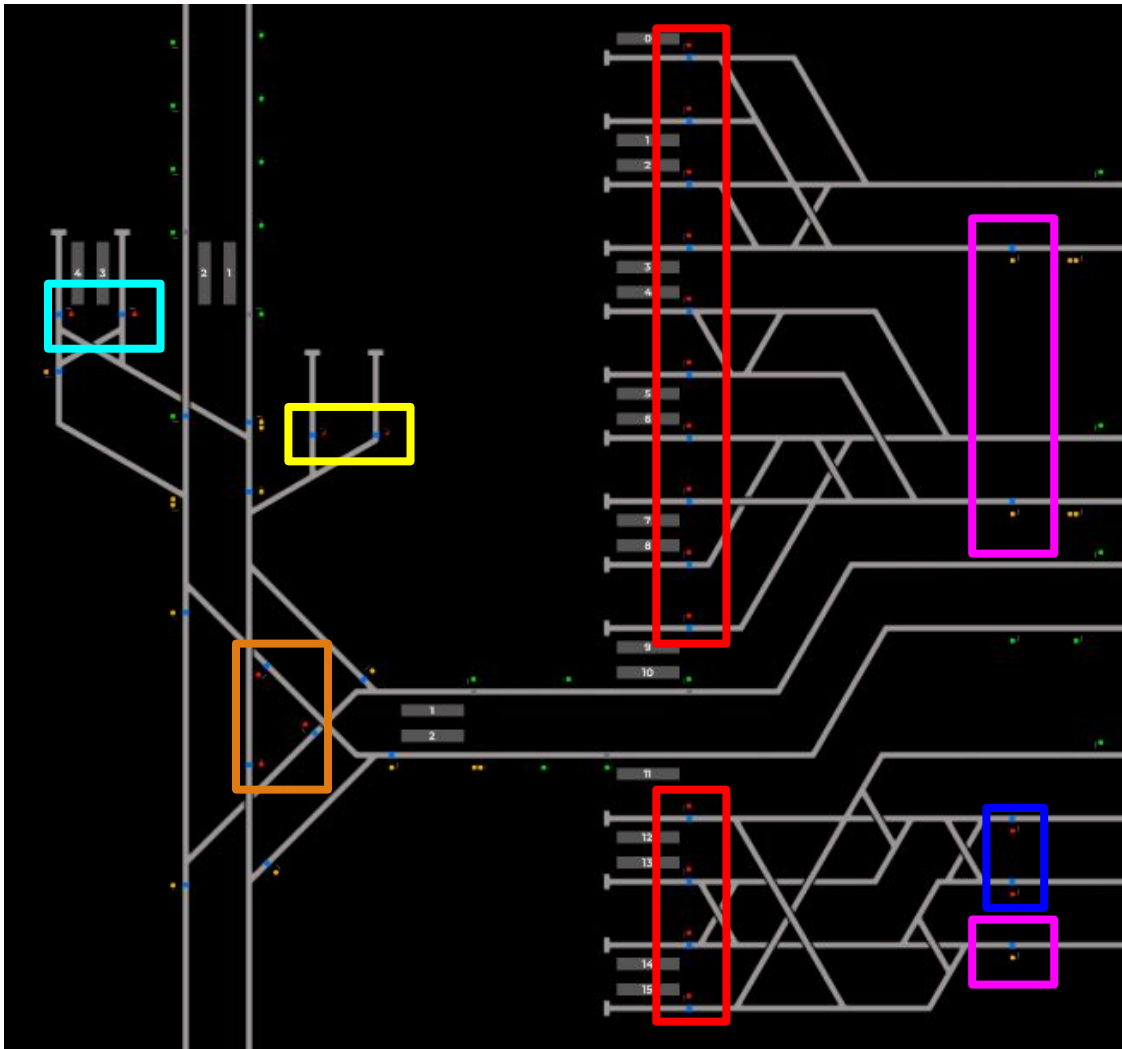


1. Trains prioritise Platform 5 at Stepford East. **Stepford East Platform 6** should be set to Danger.
2. Mind the **junctions going to and from Whitefield** at Stepford East, 2 merging tracks means one of them has to be on Danger. Set both **Stepford East Platform 1 and 2 to Danger**, as platform allocation is randomized.
3. Mind the **junction between Stepford Depot and Stepford East** out of 2 conflicting signals, one should always be at Danger!
4. Set the **junction before Stepford East Platform 1 and 2** to Danger.

Note: Trains from Stepford Central Platforms 4-9 will prioritise Platform 1 at Stepford East.



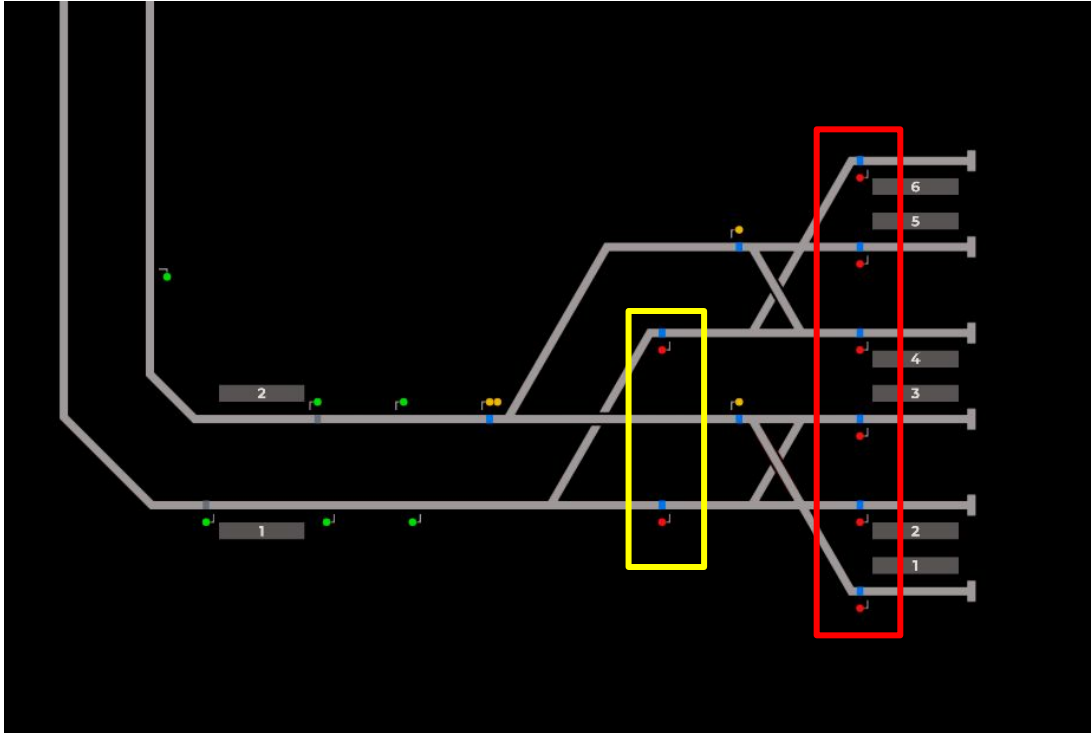
Section 4 – Stepford Central and Beechley



1. Set **Beechley terminating platforms** to Danger.
2. Set **Beechley sidings** to Danger.
3. Set **inner Beechley triangle signals** to Danger.
4. Set **Stepford Central terminating** station signals to Danger.
5. Set the **top two Airlink Stepford Central approach** signals to Danger.
6. When changing a signal to let a train out from Stepford Central, **make sure to turn the corresponding arrival signal** to Danger.



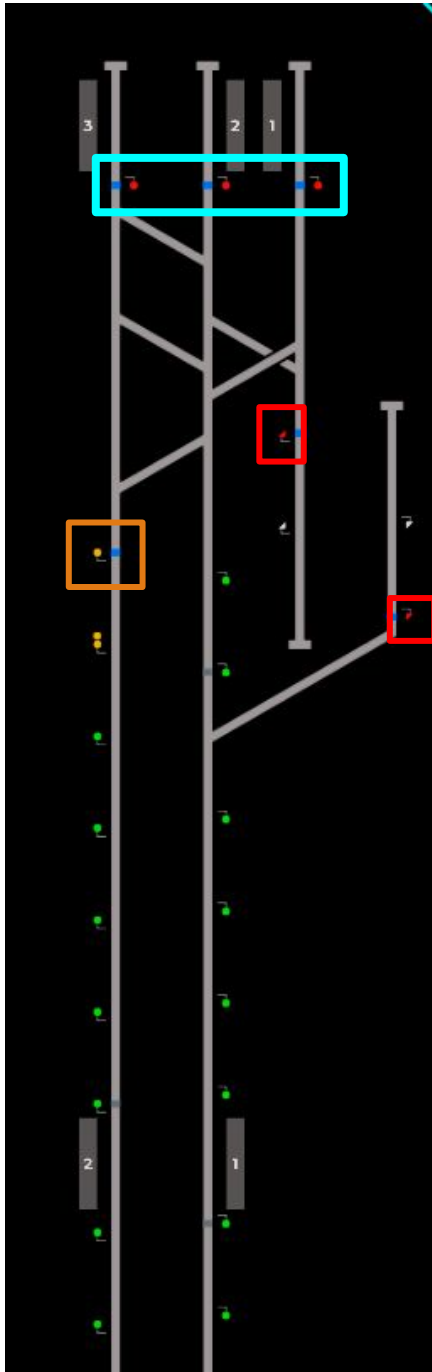
Section 5 – Stepford Victoria and Financial Quarter



1. Set **Stepford Victoria Platforms** to Danger.
2. Don't forget the **junction leaving Stepford Victoria** where the tracks from Platforms 1-3 and 4-6 merge.

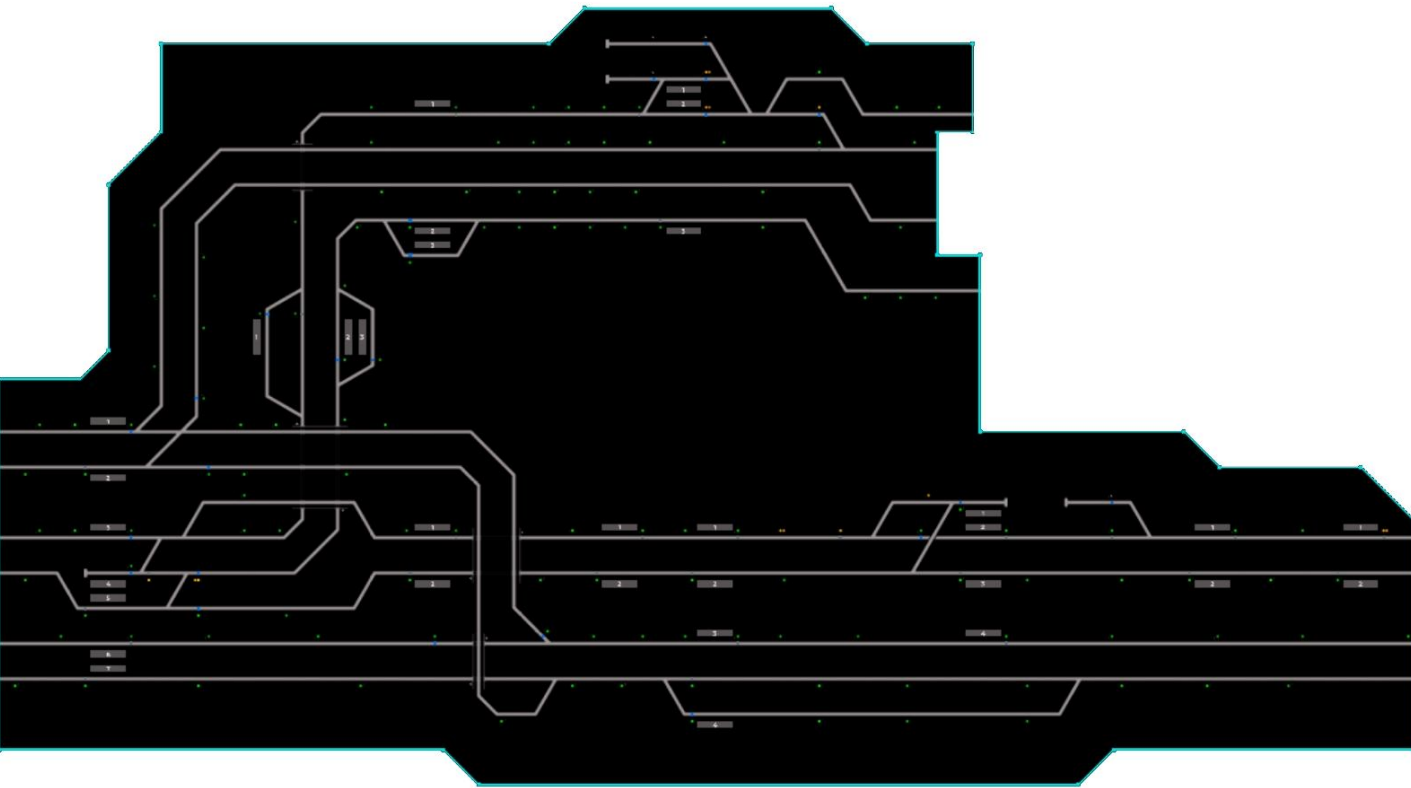


Section 6 – Hemdon Park and Willowfield



1. **Platforms at Willowfield** need to be set to Danger.
2. Don't forget when letting a train out from Willowfield or to Willowfield from the depot to set **this signal** to Danger first.
3. Set **these depot signals** to Danger.

Note: Trains terminating at Willowfield from the mainline will prioritise into Platform 3 (if available). Trains from the depot will prioritise into Platform 1 (if available).

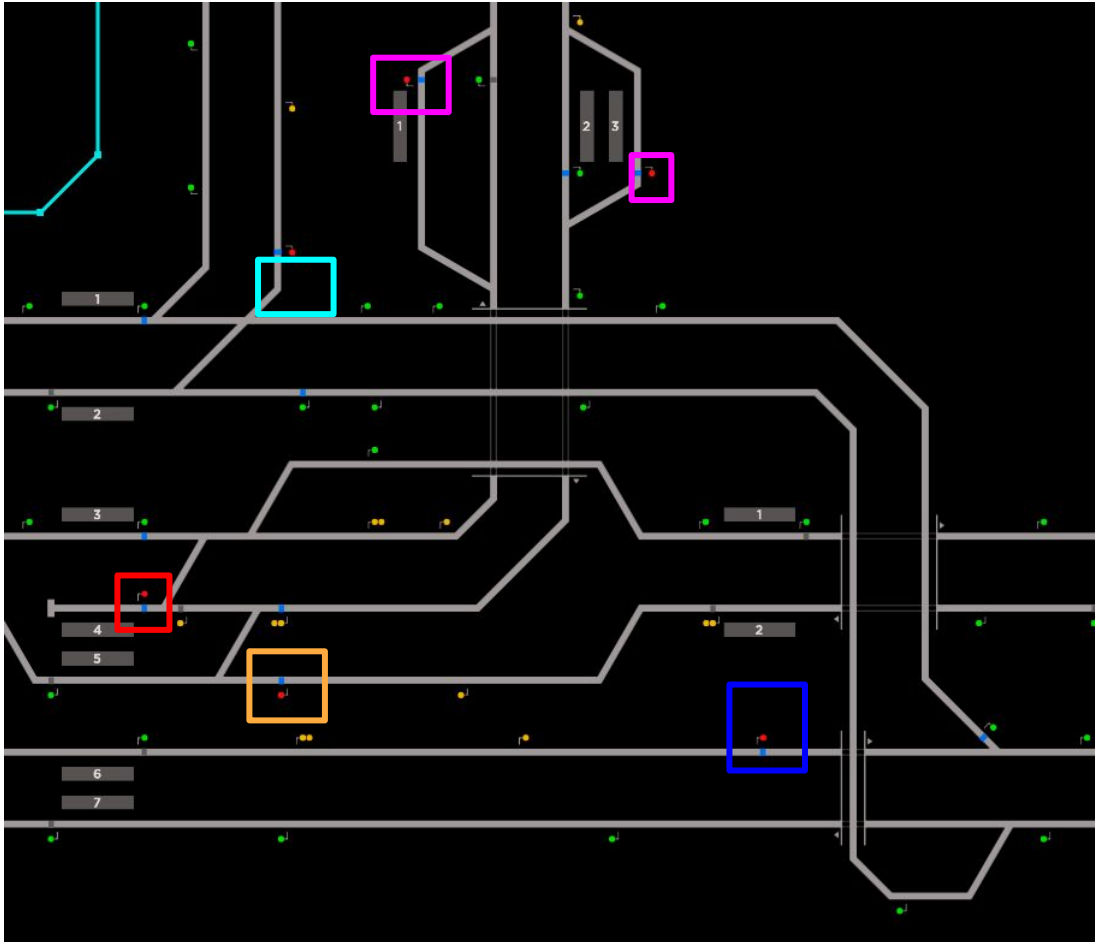


Zone B controls the important St. Helens Bridge junction for Express services as well as the corridor to Coxly and the corridor to Beaulieu Park. It is split in three sections:

- **St Helens Bridge <> New Harrow / Angel Pass**
- **Bodin <> Coxly**
- **Elsemere Pond <> Beaulieu Park**



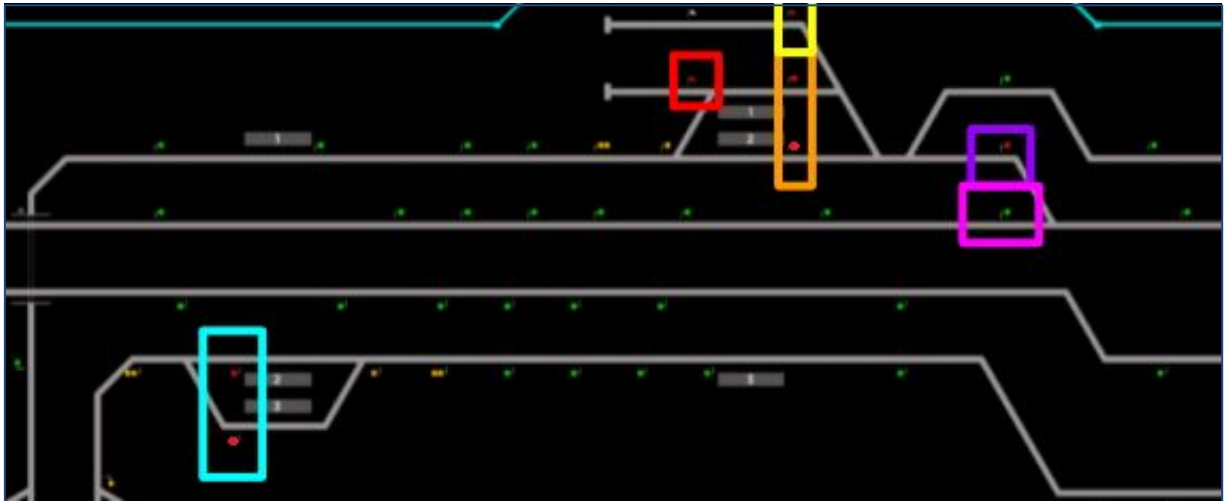
Section 1 – St Helens Bridge <> New Harrow / Angel Pass



1. **St Helens Bridge Platform 4** needs to be set to Danger.
 2. **Express Signal from Benton** needs to be set to Danger to allow Express services to leave Platform 1 and give priority to fast Express services via Morganstown.
 3. **Connect line from Morganstown** needs to be set to Danger.
 4. **Angel Pass Platforms 1 and 3** need to be set to Danger.
- Note:** Trains from Bodin will **prioritise Platform 2** (if available).
5. **Airlink signal before Express merge** needs to be set to Danger.



Section 2 – Bodin \leftrightarrow Coxly



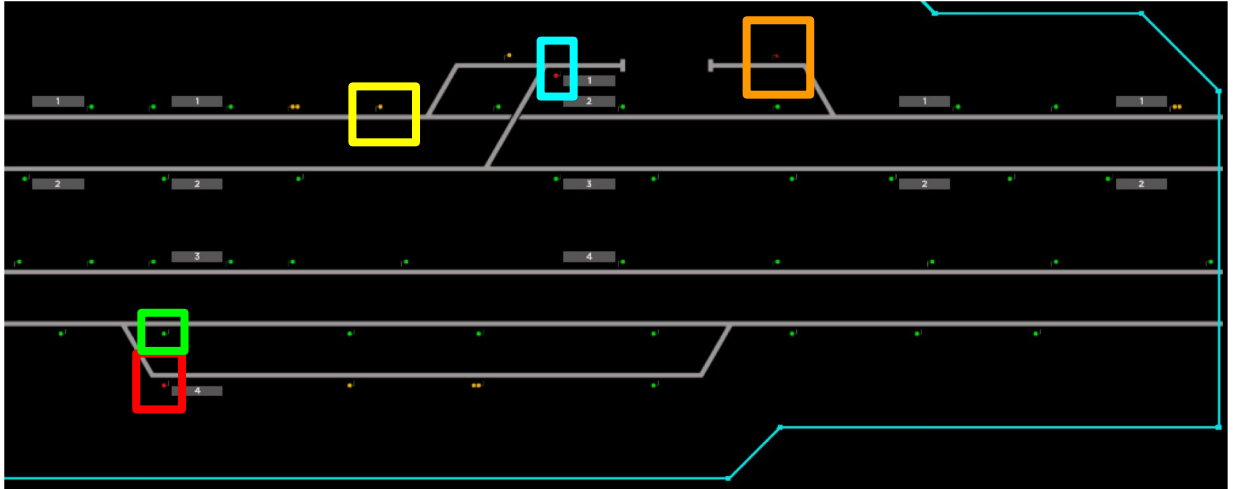
1. Keep Bodin Platform 1 on Proceed.
Platforms 2 and 3 merge after Bodin. Therefore, **Platform 2 and 3** must be set to Danger.
2. Keep Coxly Platform 3 on Proceed.
Platforms 1 and 2 merge after Coxly. Therefore, **Platform 1 and 2** must be set to Danger.

Note: Trains from the mainline will prioritise into Coxly Platform 2 (if available) so that trains can enter Platform 1 from the station siding.

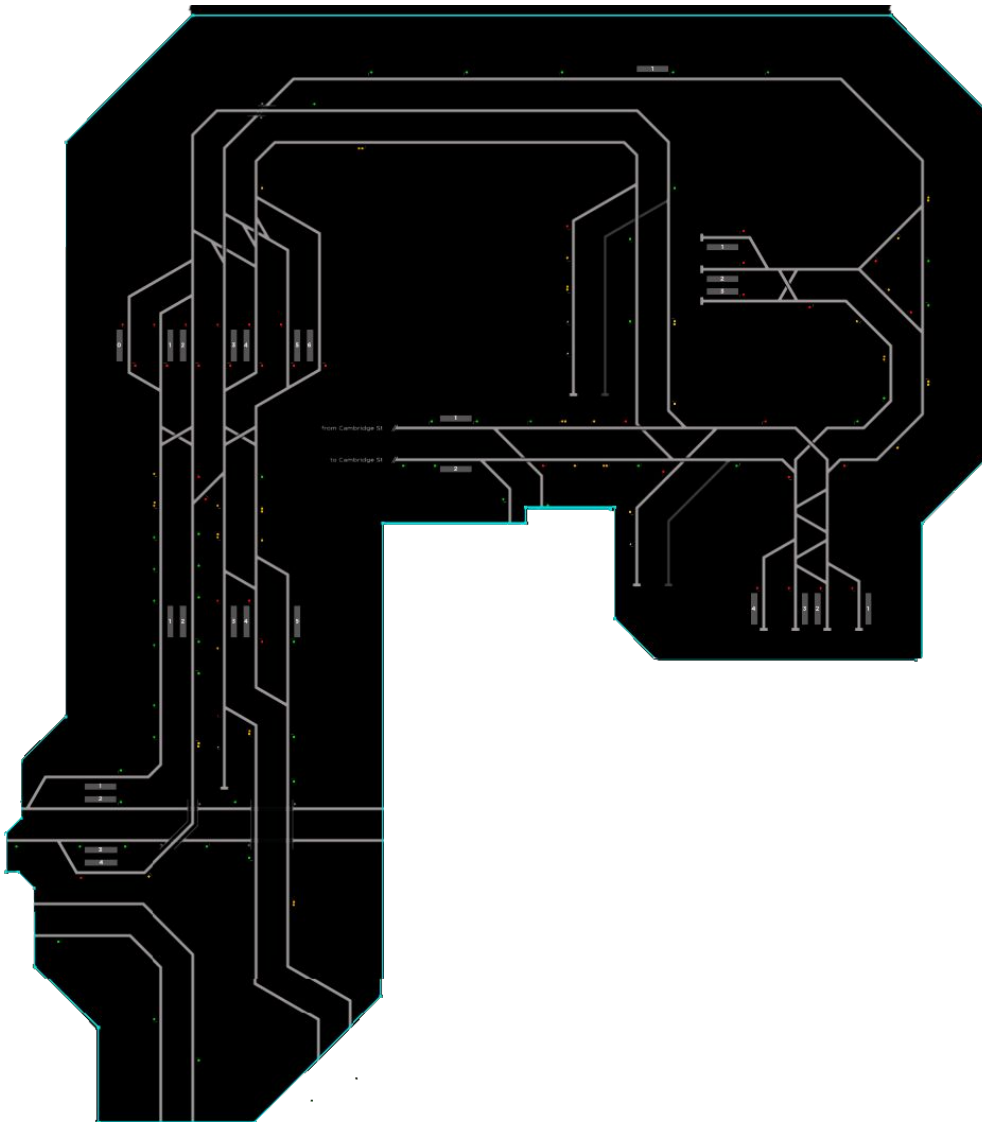
3. Set the **station siding signal** to Danger because the mainline has priority to enter Coxly.
Set the **bypass siding signal** to Danger because mainline trains exiting Coxly have priority.
4. Set **this signal** to Danger because it conflicts with **this signal**.
Switch them as needed.



Section 3 – Elsemere Pond <> Beaulieu Park



1. Keep all Elsemere Junction Connect Platforms on Proceed.
2. Set the **Berrily Terminating Platform** to Danger.
Similar to Angel Pass, Elsemere Junction has a platform for stopper services and a passing track for Airlink services heading Westbound. Set **this signal** to Danger and keep the **passing track** on Proceed.
4. When a terminating train leaves Platform 1 at Berrily, set **Signal A033** to Danger.
5. **Set Berrily Depot** to Danger.



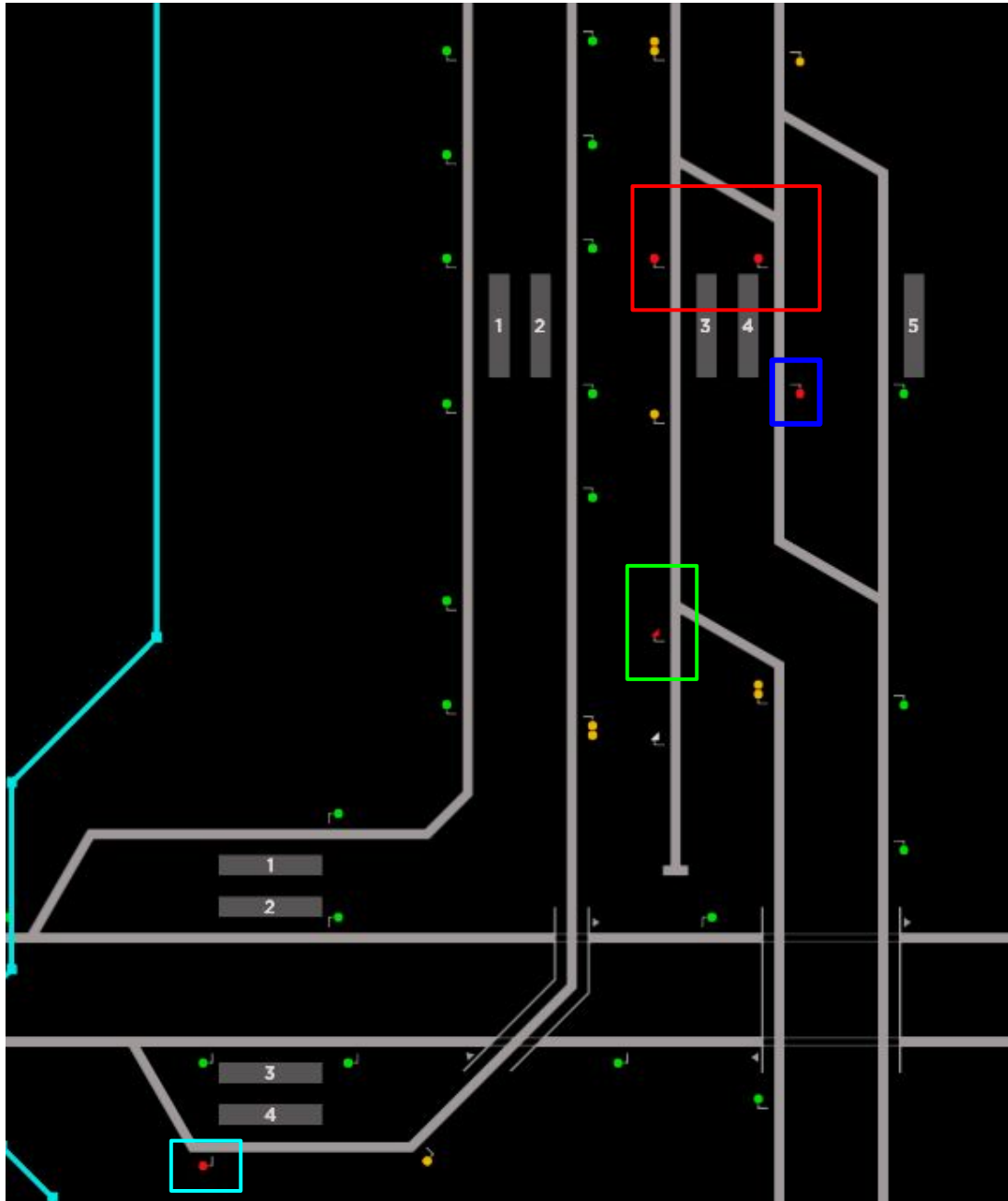
Other zones removed from this diagram for clarity.

Zone C controls the busy Stepford Airport area including the terminals, Airport Parkway Siding, Farleigh Depot, Benton Bridge and Airport West. It is split into 4 sections:

- **Benton Bridge, Airport Parkway Siding and Stepford Airport Parkway**
- **Stepford Airport Central**
- **Airport Terminals 1 and 3 with Farleigh Depot (Road 11)**
- **Airport West, Farleigh Depot (Road 17) and Terminal 2**



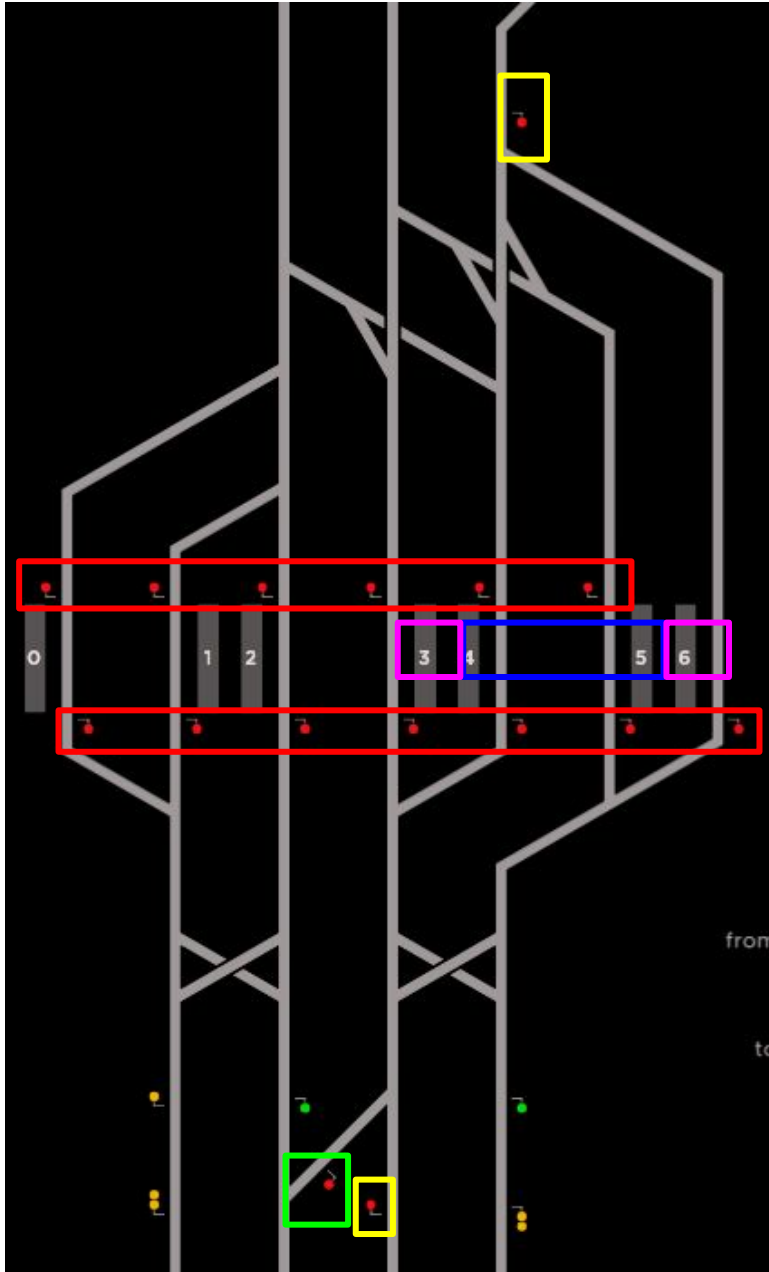
Section 1 – Benton Bridge and Stepford Airport Parkway



1. Set **Benton Bridge Platform 4** to Danger.
2. Set **Airport Parkway Platforms 3 and 4** to Danger.
3. Set **Airport Parkway Platform 4 facing Morganstown** to Danger. Trains from Airport Central bound for Stepford and Leighton will **prioritise Platform 5** (if available).
4. Set **Airport Parkway Siding** to Danger.



Section 2 – Airport Central



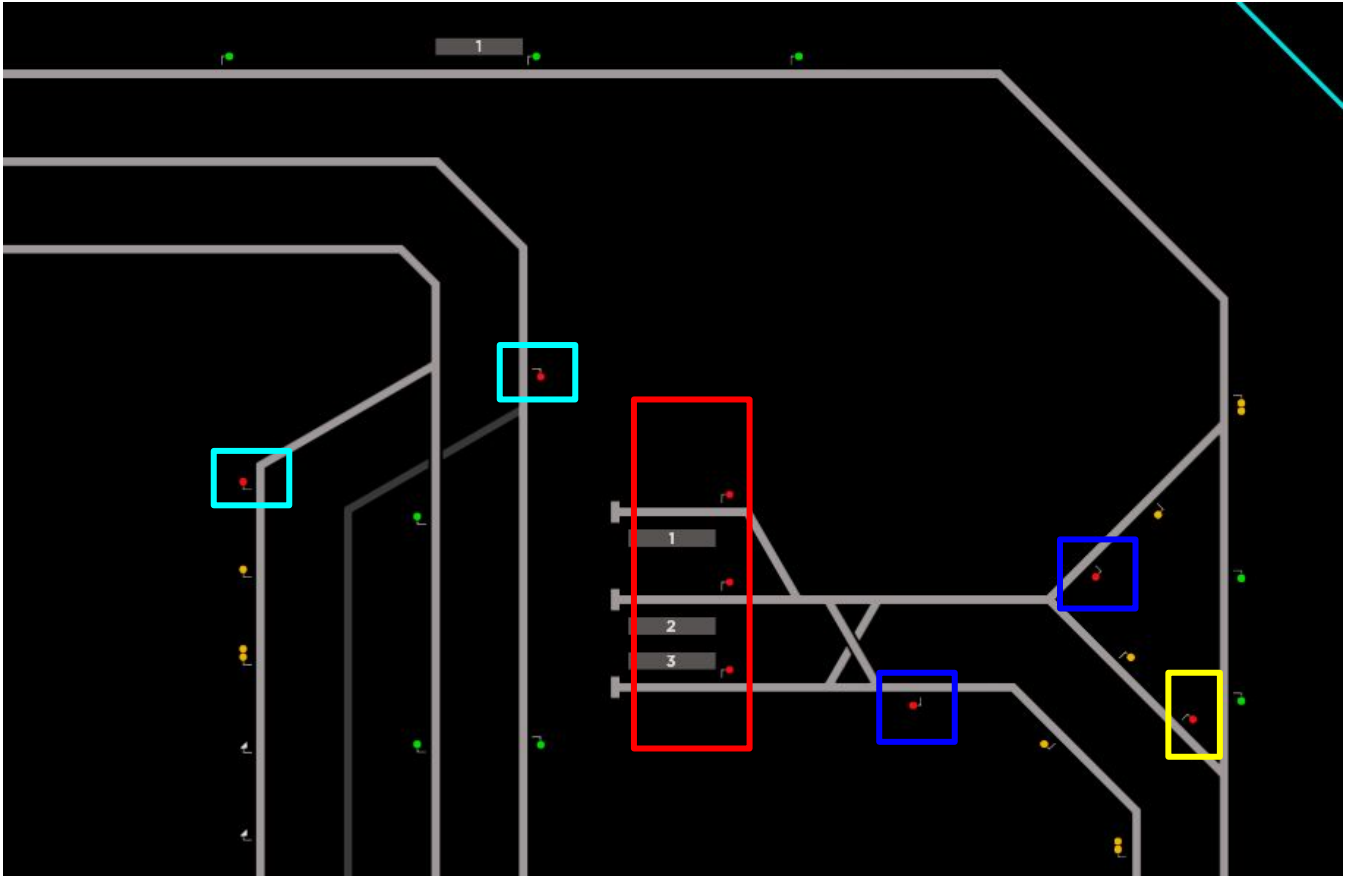
1. Set **all Airport Central Platforms** to Danger.
2. Set this **junction signal** to Danger.
3. Set the **arrival signals into Airport Central (both)** to Danger.

Note: Trains from both directions **have a unique platform they can access** (P3 or P6). **Platforms 4 and 5 are completely bi-directional.**

Services **NOT** scheduled to stop at **Terminal 1** will **not** use **Platform 5**.



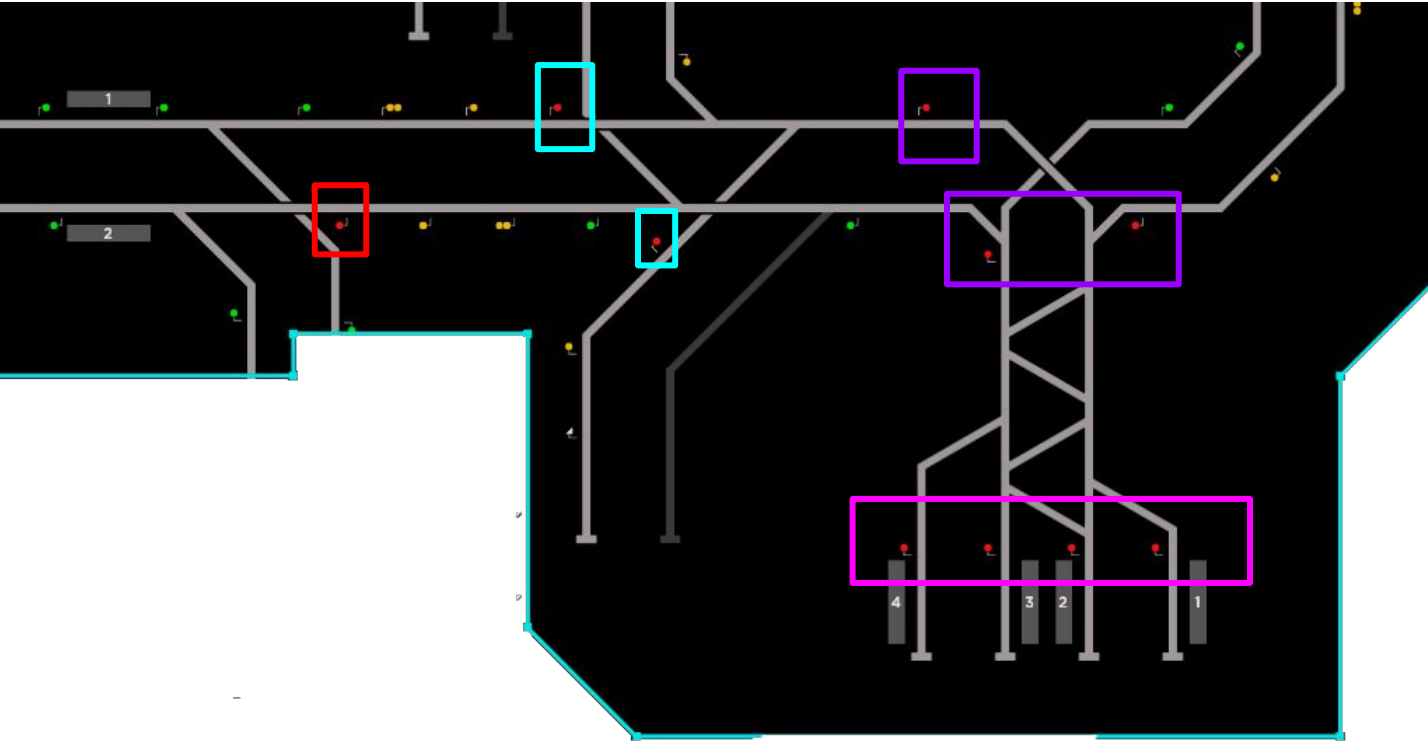
Section 3 – Airport Terminals 1 and 3 with Farleigh Depot (Road 11)



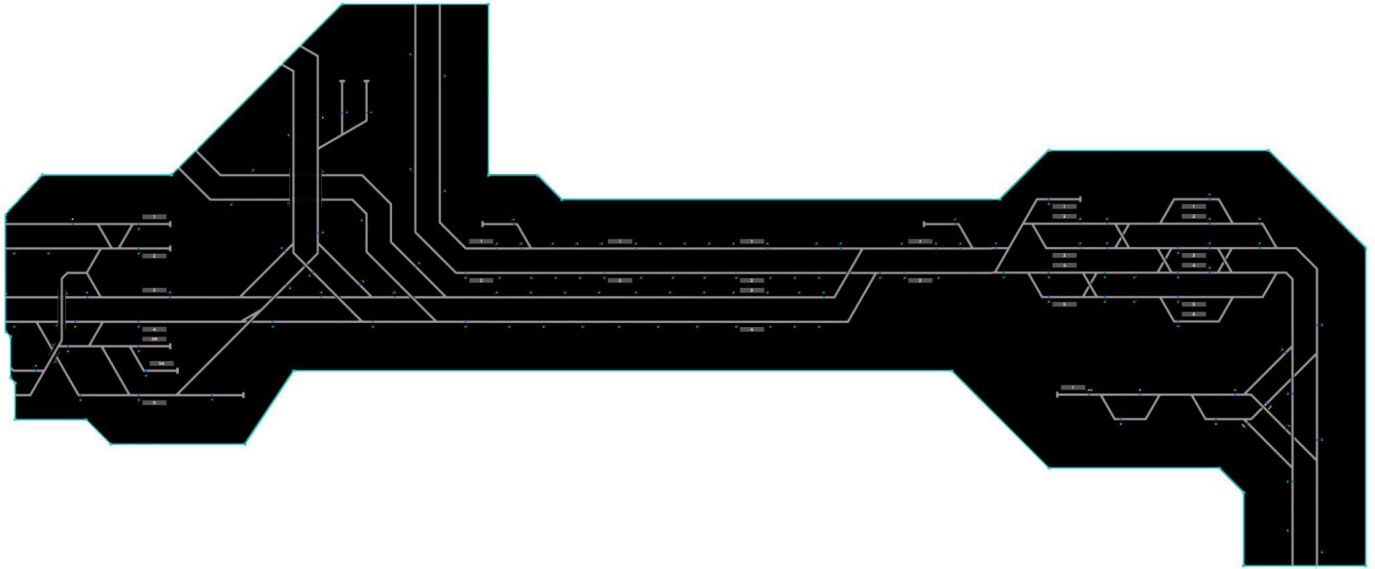
1. Set the **depot merge and the depot branch** signal to Danger.
2. Set **Terminal 3 Platforms** to Danger.
3. Set these **arrival signals** to Danger.
4. Set **this inner triangle signal** to Danger.



Section 4 – Airport West, Farleigh Depot (Road 17) and Terminal 2



1. Set the **signal approaching Airport West** to Danger.
2. Set **these signals at the main junction** to Danger.
3. Set **these signals at the Terminal 2 junction** to Danger.
4. Set the **Terminal 2 Platforms** to Danger.

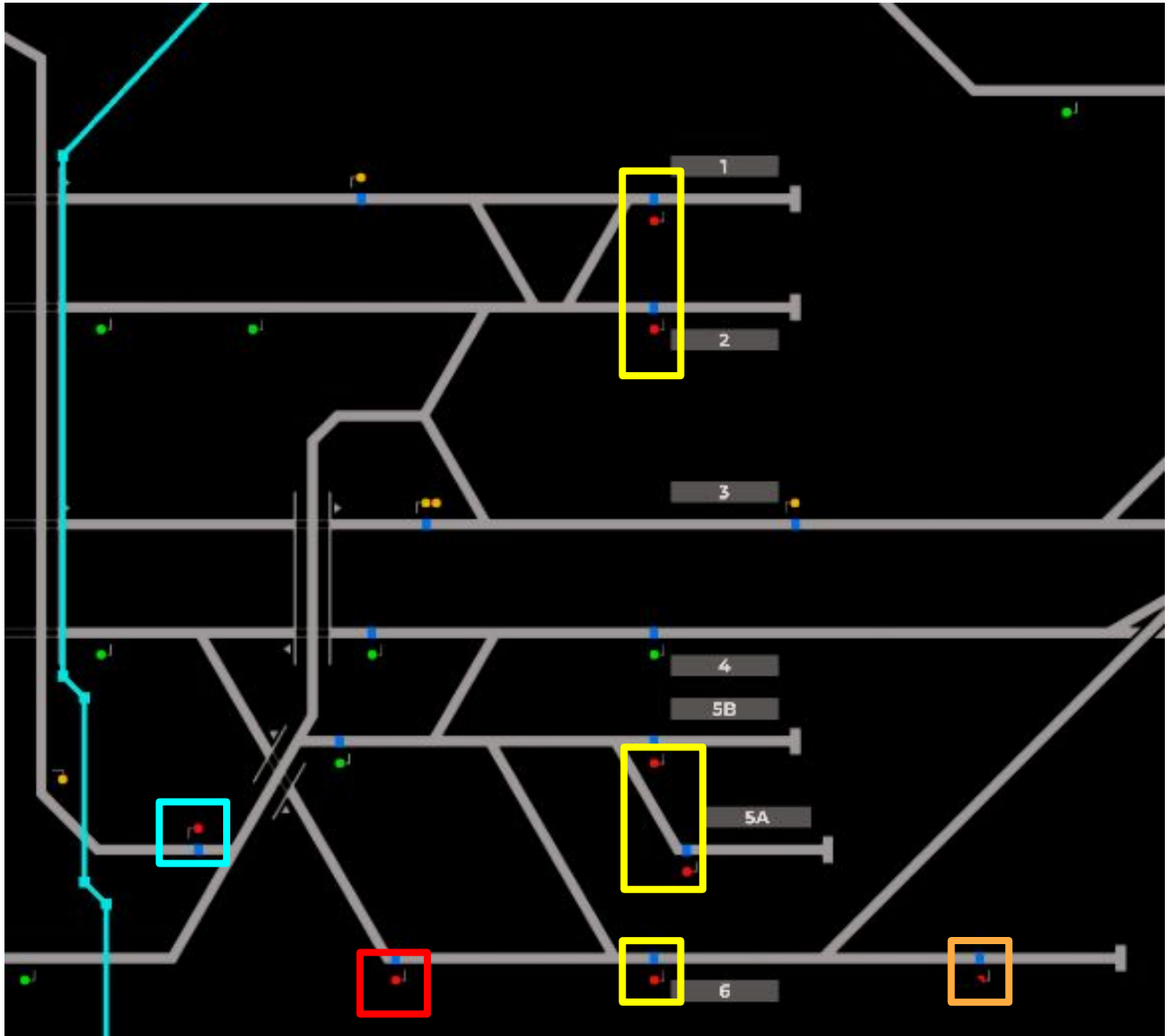


This zone controls Morganstown, Stepford Airport Depot, Morganstown Junction, Leighton Line (from Hampton Hargate to Leighton West), and the Leighton West Branch. This desk can be split into 4 different sections:

- **Morganstown Station**
- **Airport Depot <> Hampton Hargate Depot**
- **Upper Staploe <> Leighton Depot**
- **Leighton Stepford Road <> Leighton City / Leighton West Branch**



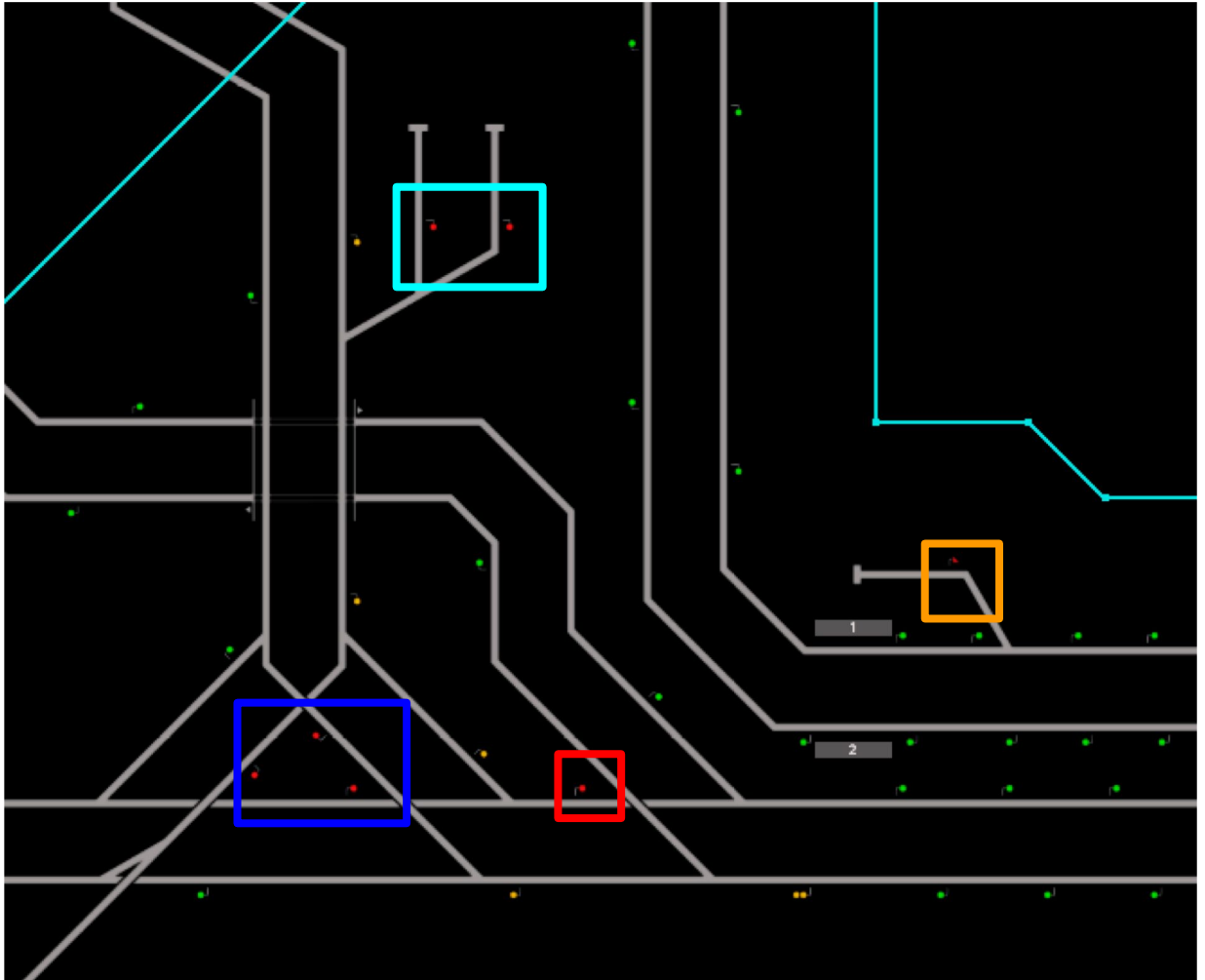
Section 1 – Morganstown Station



1. Set **Morganstown Platforms 1, 2, 5A, 5B and 6** to Danger.
 - o **Note:** Platform 4, 5 and 6 collide with each other. When clearing trains out of Platforms 4 or 5, you'll need to set **Platform 6 to Danger first**.
2. Set **inbound line from Morganstown Docks** to Danger.
 - o **Note:** This signal can cause conflicts with the express line for platform 3 and platforms 5A-6 be careful of accidental adverse signal changes
3. Set **Morganstown Siding** to Danger.
4. **This signal** should be set to Danger as it conflicts with the line from Platform 4.



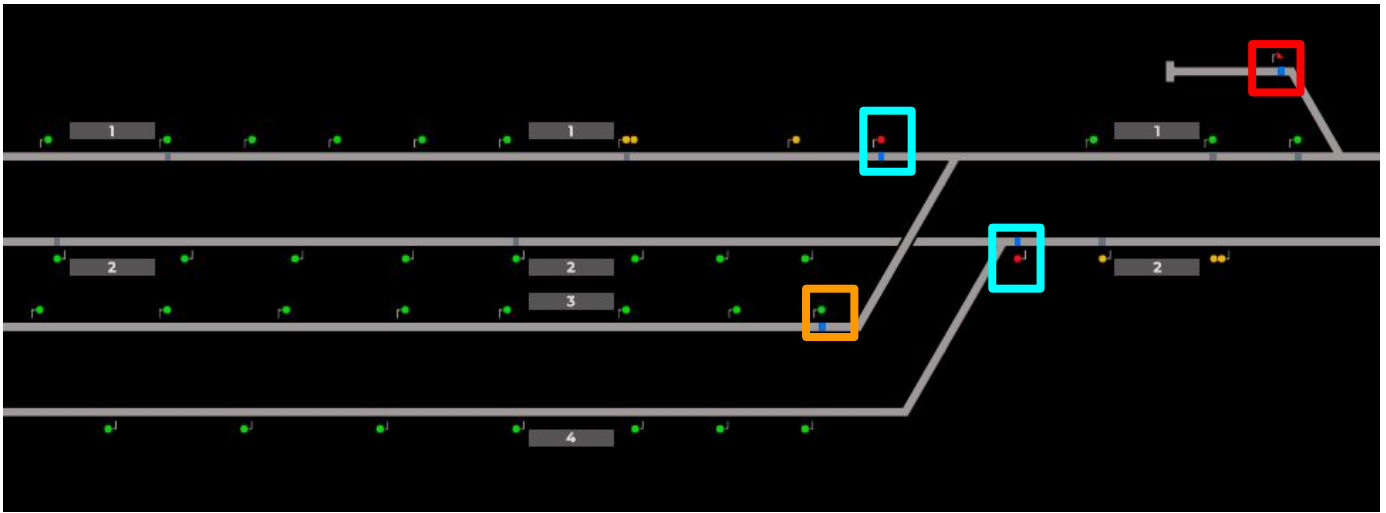
Section 2 – Airport Depot <> Hampton Hargate Depot



1. Set **Airport Parkway Depot** to Danger.
2. Set the **inner signals of the Morganstown Triangle** to Danger.
3. **This signal** MUST be set to Danger after the triangle before Express merges onto the Leighton Line.
4. Set **Hampton Hargate Siding** to Danger.



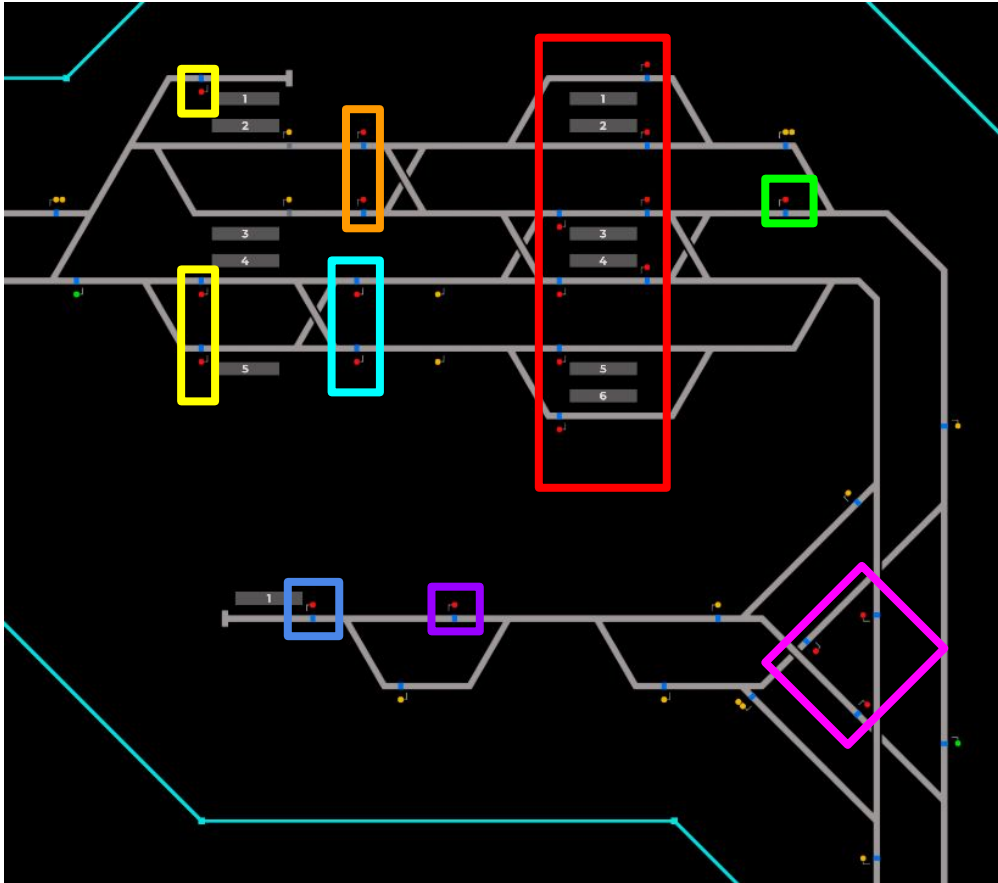
Section 3 – Upper Staploe <> Leighton Depot



1. Set **these signals** to Danger as it merges with Express/Airlink before Rocket Parade.
2. When changing either signal above, you MUST set **this signal** to Danger first.
3. Set **Leighton Depot** to Danger.



Section 4 – Leighton Stepford Road <> Leighton City / Leighton West Branch



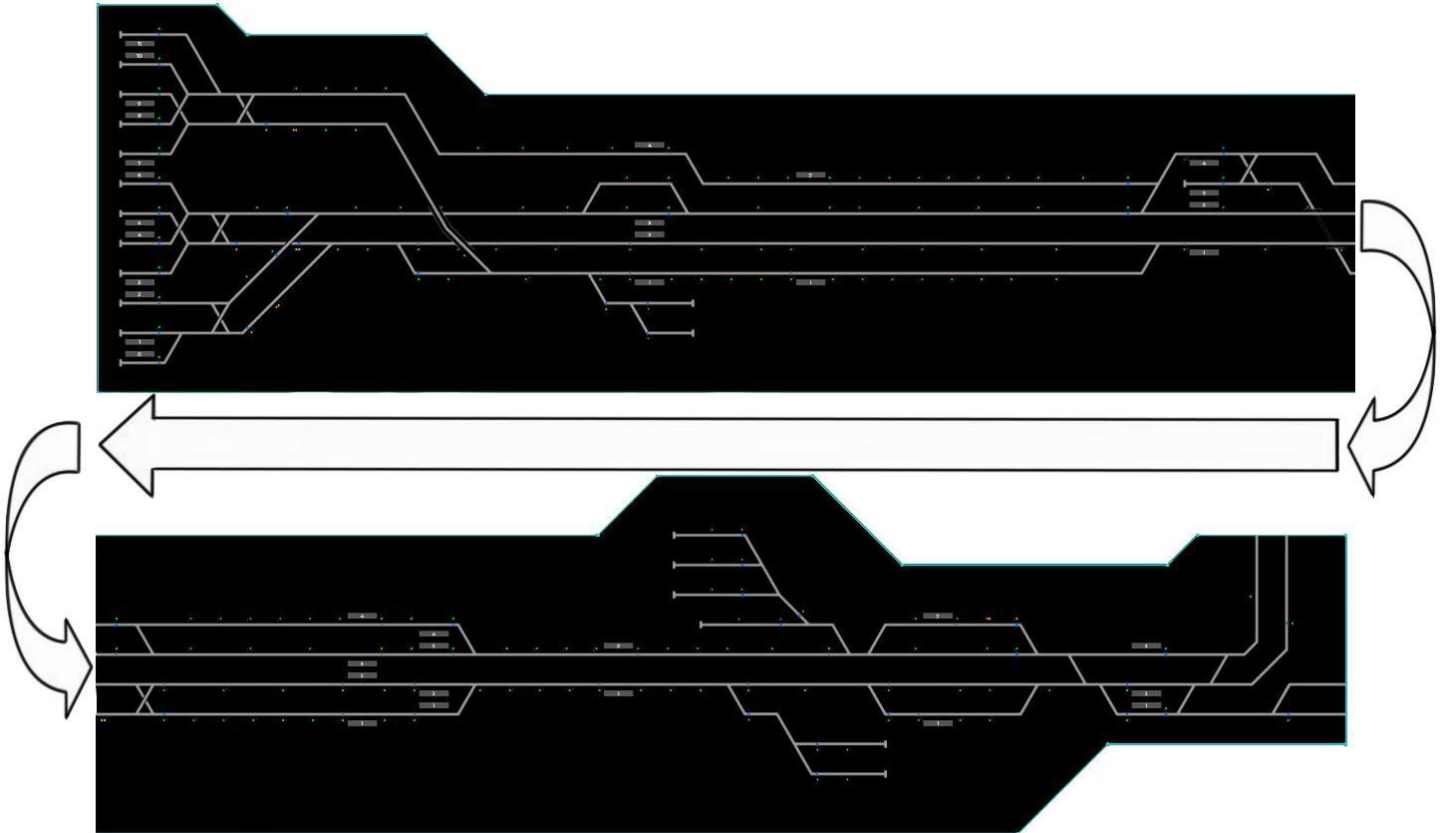
1. Set **Platform 1, 4, and 5 at Leighton Stepford Road** to Danger.
2. It is recommended to set **both of these signals** to Danger. LSR **Platform 2 will be prioritized** over Platform 3.
3. Set **both of these signals** to Danger.

Note: Trains from **LC Platforms 3 and 4** will **prioritise into Platform 4** at LSR.

Trains from **LC Platforms 5 and 6** will **prioritise into Platform 5** at LSR.

If you are routing two trains from LSR **to** LC at the same time, the second train can be forced into platforms 3&4, **only once the train on the top track** (track from LSR p2) **has passed the signal first**. The route for the second train **cannot be set until** the train on the top track passes the signal first.

4. Set **all station signals at Leighton City** to Danger.
5. Set **this signal** to Danger as it merges with Leighton City Platforms 1 & 2
6. Set **these three inner signals** in the triangle junction to Danger.
7. Set **this signal** to Danger as it collides with other portions of the track headed to Leighton West.
8. Set **Leighton West** to Danger.

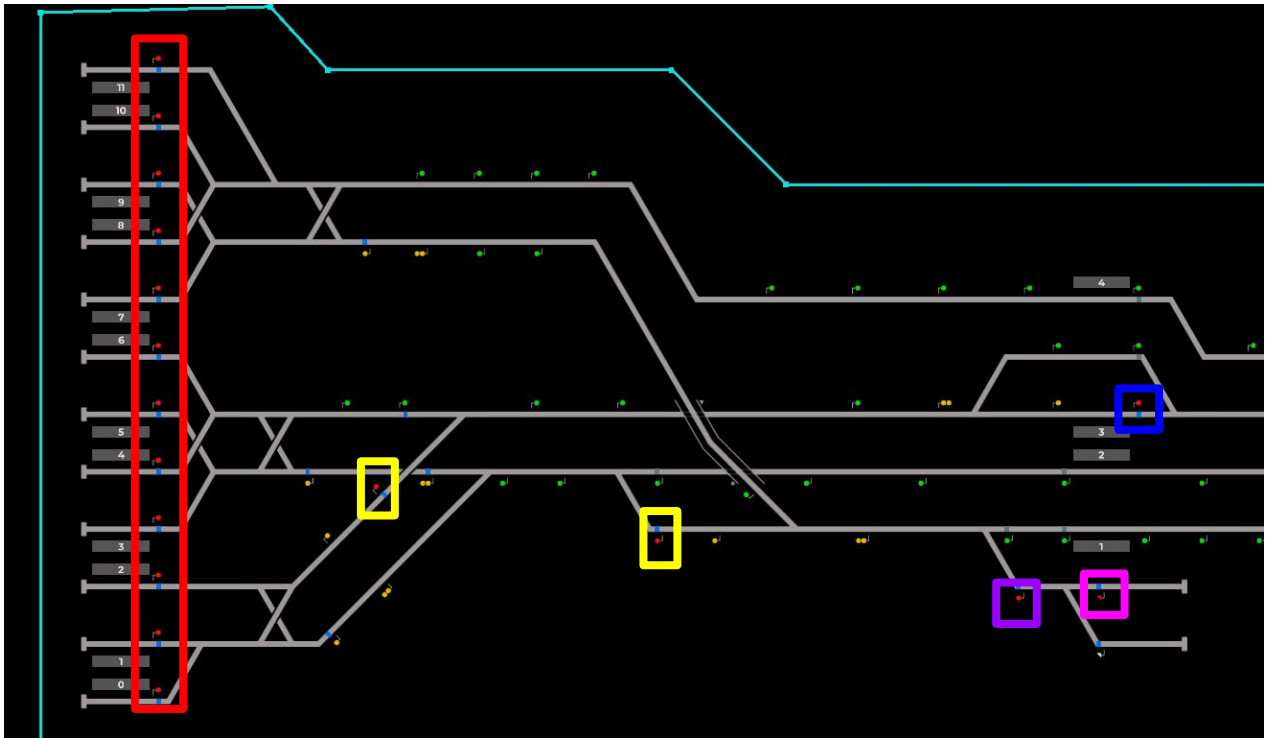


Zone E contains the line from Llyn-by-the-Sea to Edgemean. This desk is made up of 4 sections:

- **Llyn-by-the-Sea <> Northshore**
- **Starryloch <> Westwyvern**
- **Millcastle <> Faymere**
- **Edgemean**



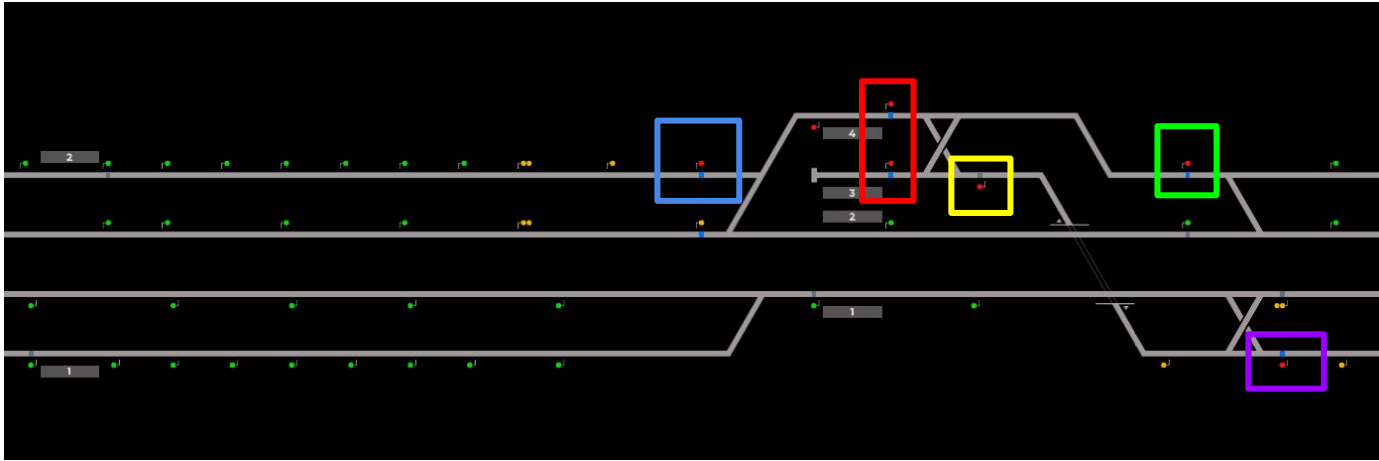
Section 1 – Llyn-by-the-Sea <> Northshore



1. Set the **station signals at Llyn-by-the-Sea** to Danger.
2. Set **these signals** to Danger as they merge with other tracks inbound/outbound of Llyn.
3. Set **this signal at Northshore Depot** to Danger as Express trains spawn in the lower track.
4. Set **the signal before the mainline** at Northshore Depot to Danger.
5. Set **Northshore Platform 3** to Danger.



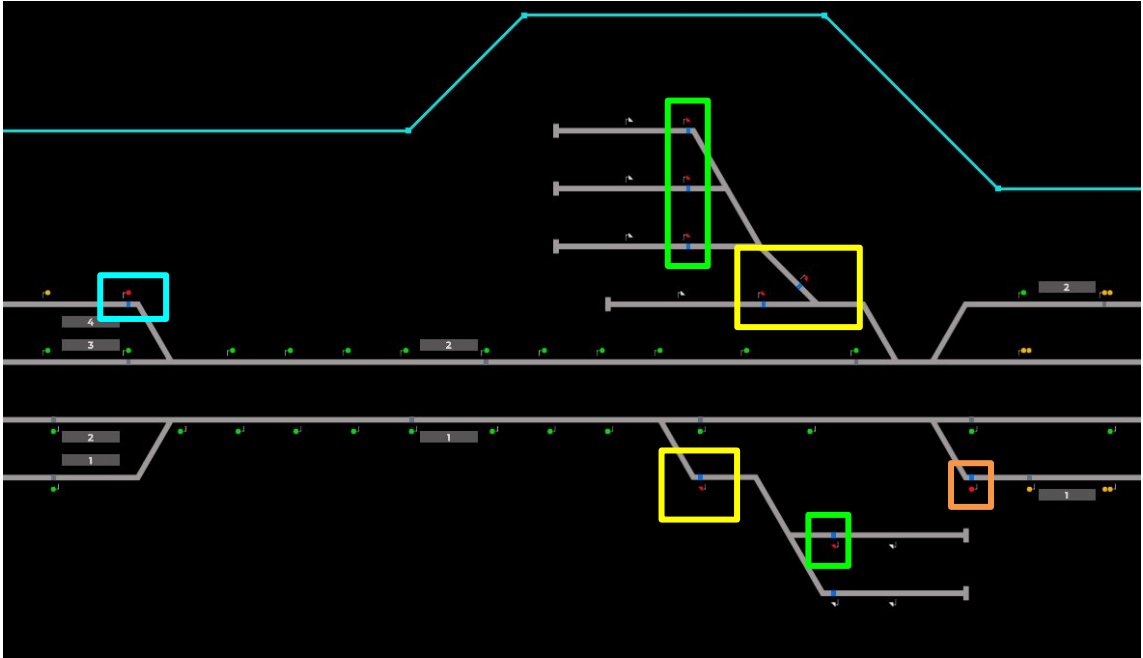
Section 2 – Starryloch <> Westwyvern



1. Set the signals at **platforms 3 and 4** to Danger.
2. Set the signal controlling entrance to **platforms 3 and 4** to Danger.
3. Set the **slow line signal facing Edgemean** to Danger.
4. Set the **Connect signal controlling platform 4** to Danger.
5. Set the **Connect signal from Edgemean** to Danger.
6. **Note for operating this section**
 - Express services coming **from** Llyn can use platforms 2 and 4.
 - Terminating services from **both operators** can use platforms 3 and 4.
 - Keep these in mind when controlling this section to avoid accidental adverse changes.



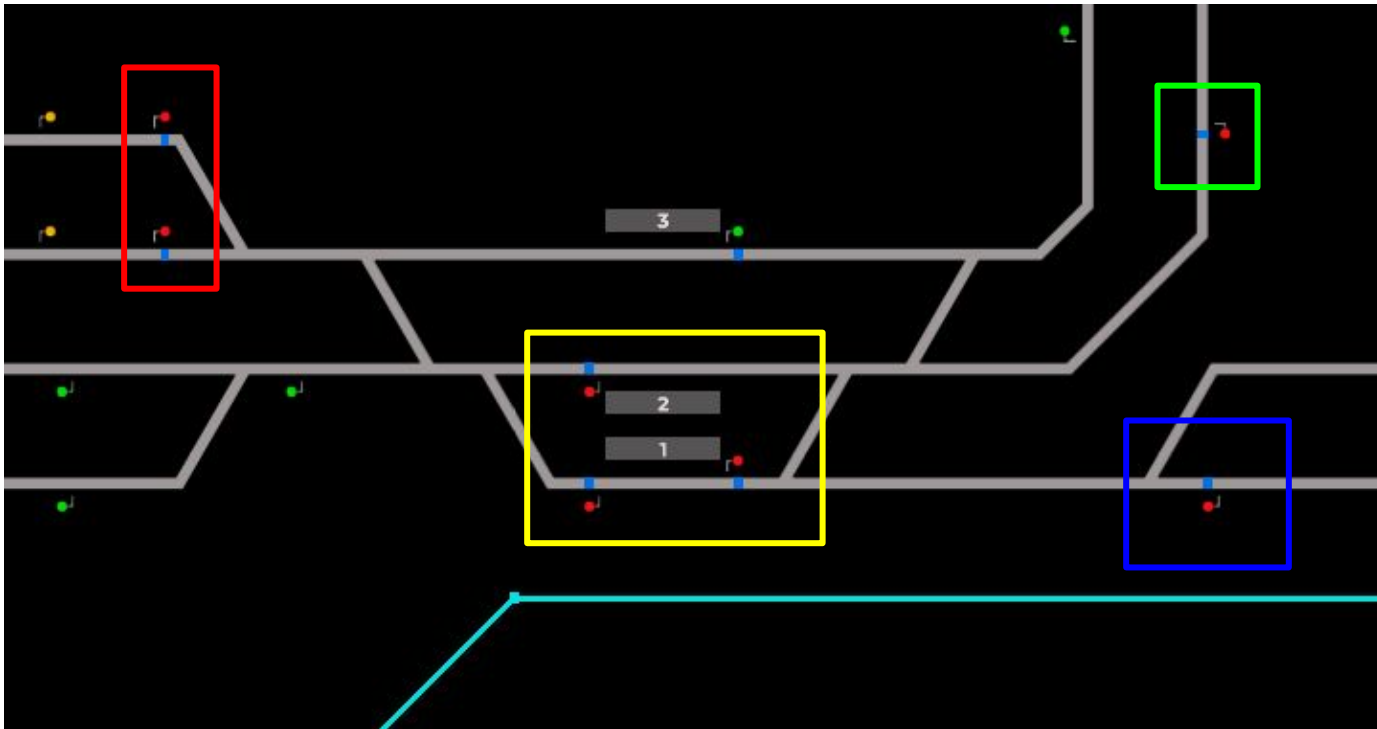
Section 3 – Millcastle <> Faymere



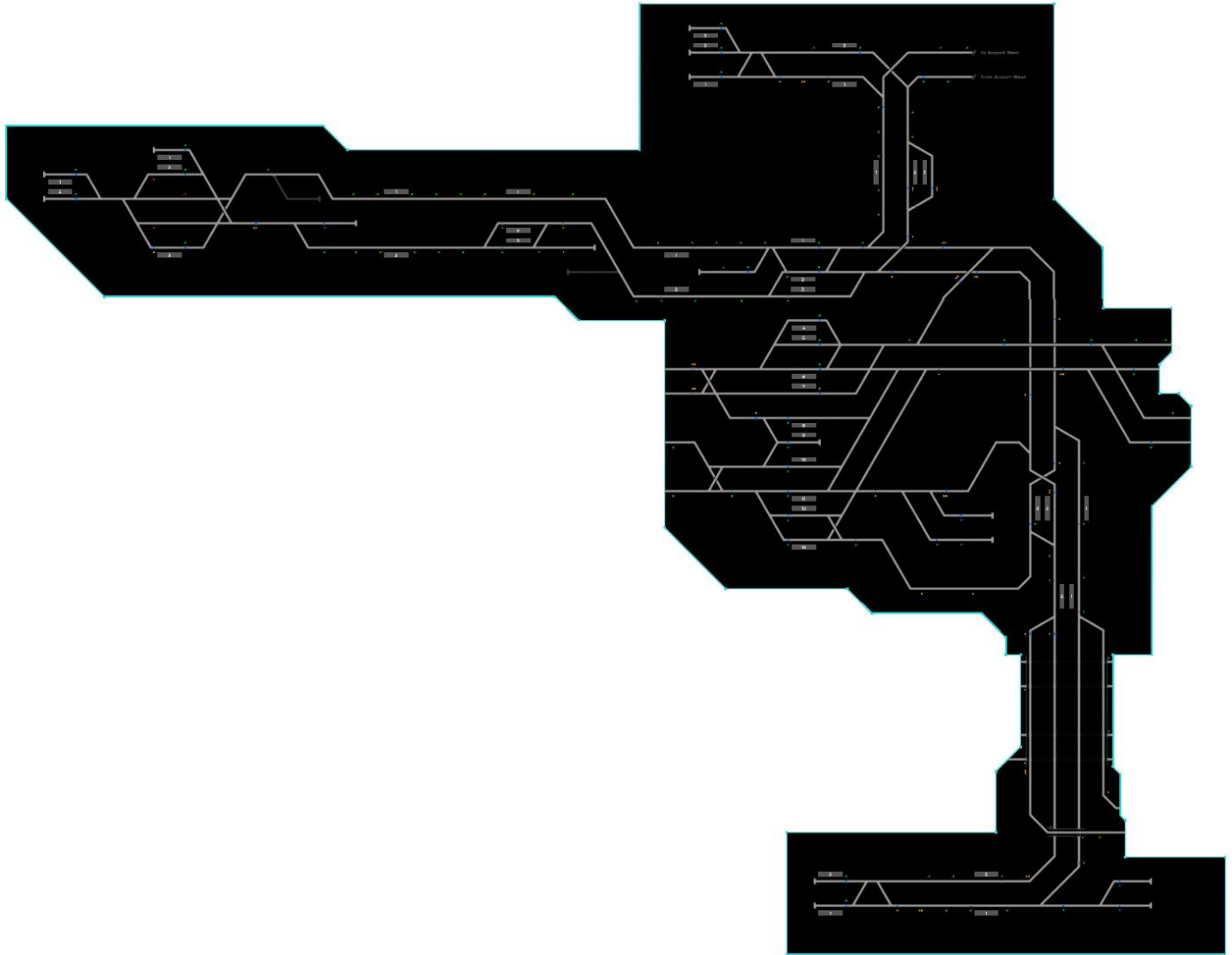
1. Set **Millcastle Racecourse Platform 4** to Danger.
2. Set these **depot tracks** at Faymere Green to Danger as Express trains spawn in the lower track.
3. Set the signals that **merge from the depot to the mainline** to Danger.
4. Set the **signal before the Connect line merges with Express** to Danger.



Section 4 – Edgemead



1. Set **both** of the signals **from Faymere** to Danger.
2. Set the **platform signals on platforms 1 and 2** to Danger.
3. Set the **signal from Leighton** to Danger.
4. Set the **signal from Rayleigh Bay** to Danger.
5. **Note for operating this section**
 - Services heading from Leighton to Llyn/Westwyvern can use platforms 1 and 2 including services not stopping at Edgemead.
 - Terminating services, and all services too and from Rayleigh Bay **will** use platform 1.
 - Remember that connect trains from the depot can use the fast tracks at Faymere.



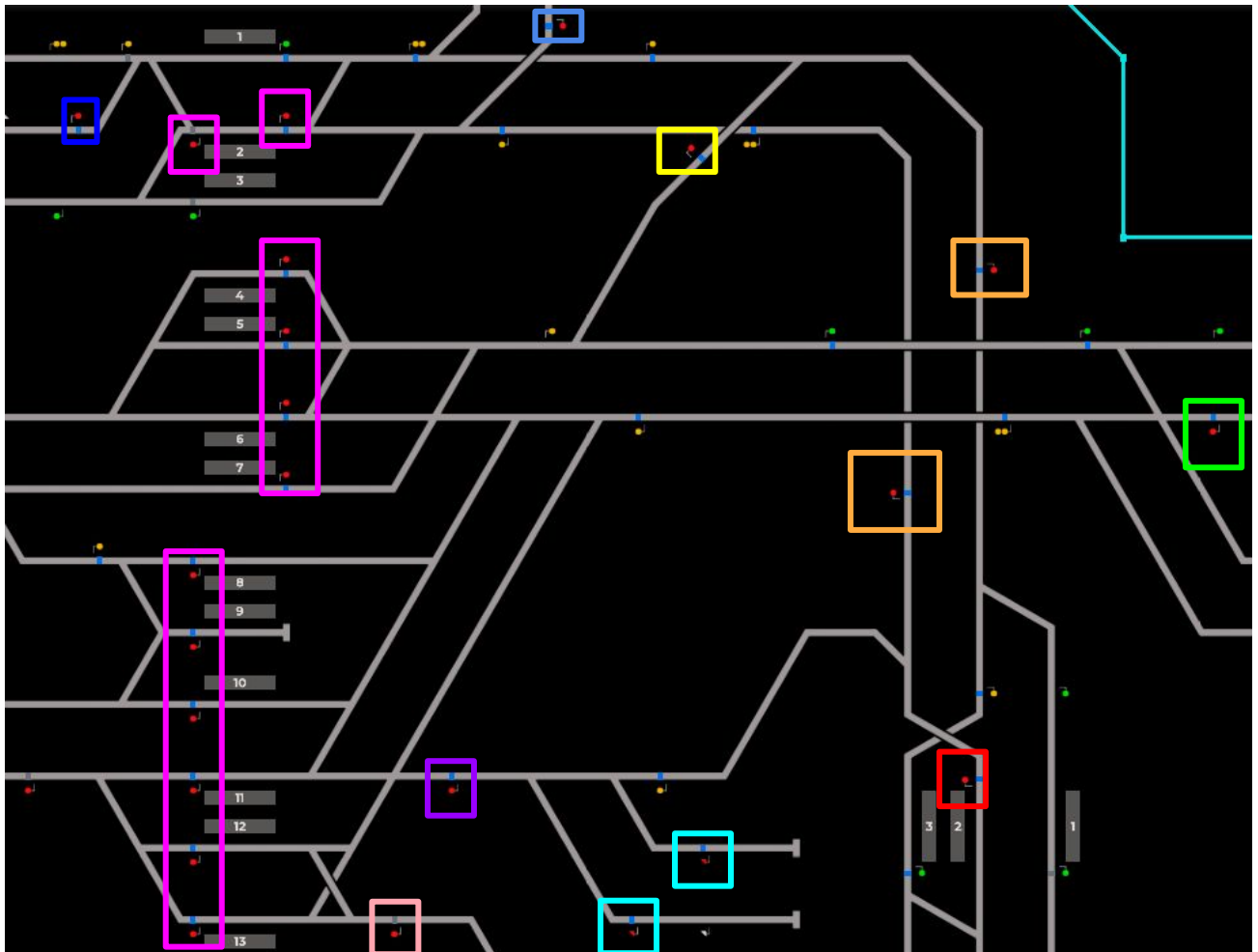
Other zones removed from this diagram for clarity.

Zone F controls the General Benton area, as well as the Waterline (excluding Morganstown and the Esterfield branch). This desk is made up of 4 sections:

- **Greater Benton Area**
- **Faraday Road <> Newry Harbour**
- **Cambridge Street Parkway to Connolly and Junction for Airport West**
- **Morganstown Docks <> Greenslade**



Section 1 – Greater Benton Area

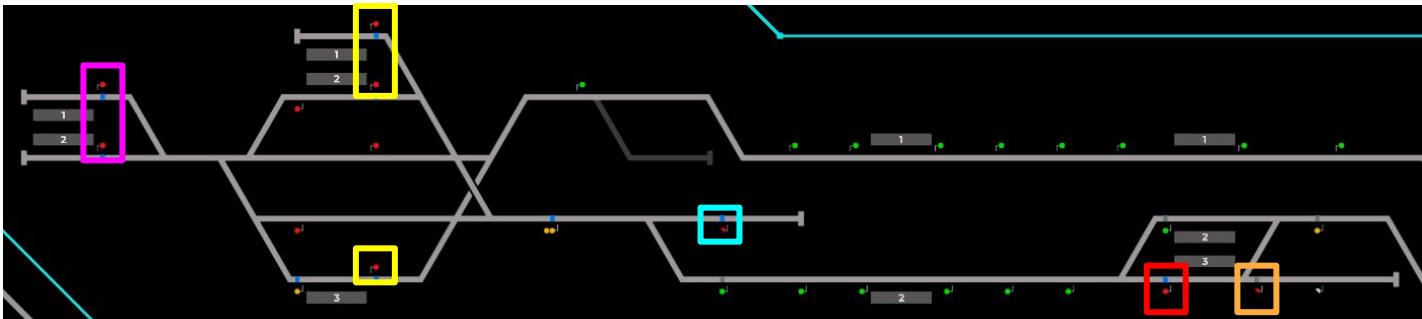


1. Set **Port Benton Platform 2** to Danger.
2. Set these **crossover signals** to Danger.
3. Set the **line for Connect to Port Benton** to Danger.
4. Set the **Connect line from Benton Bridge** to Danger.
5. Set the **Benton Depot signals** to Danger.
6. Set the **signal from Cambridge Street Parkway** to Danger.
7. Set the **signal from Benton Sidings** to Danger.
8. Set the **signal after Benton Depot** to Danger.
9. Set **these Benton station signals** to Danger.
10. Set the **signal from Port Benton to Benton** to Danger.

Note: The signal for Express services heading to Llyn collides with the inbound line to Benton. Make sure trains approaching this signal heading to Benton are not terminating services.



Section 2 – Faraday Road \leftrightarrow Newry Harbour



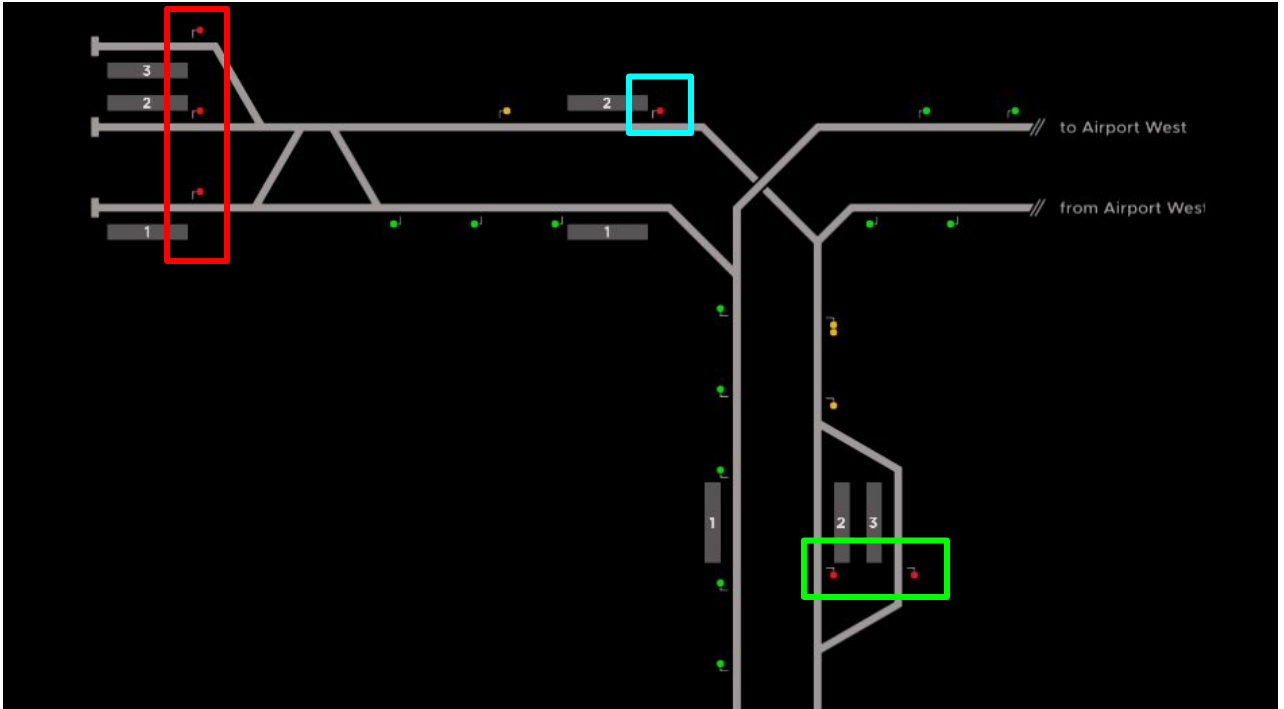
1. Set **Faraday Road Siding** to Danger.
2. Set the **Faraday Road Platform 3** to Danger.
3. Set **Newry Siding** to Danger.
4. Set **Newry Platforms 1, 2 and 3 towards Eden Quay** to Danger.

Note: Waterline trains will prioritise into Newry Platform 1 (if available).

5. Set **Newry Harbour Platforms 1 and 2** to Danger.
 - o **Note:** Be careful when clearing a train out from Newry Harbor. Trains **departing Newry Harbor use Platform 2 at Newry**. Trains arriving into Newry **can terminate** on Platform 2.



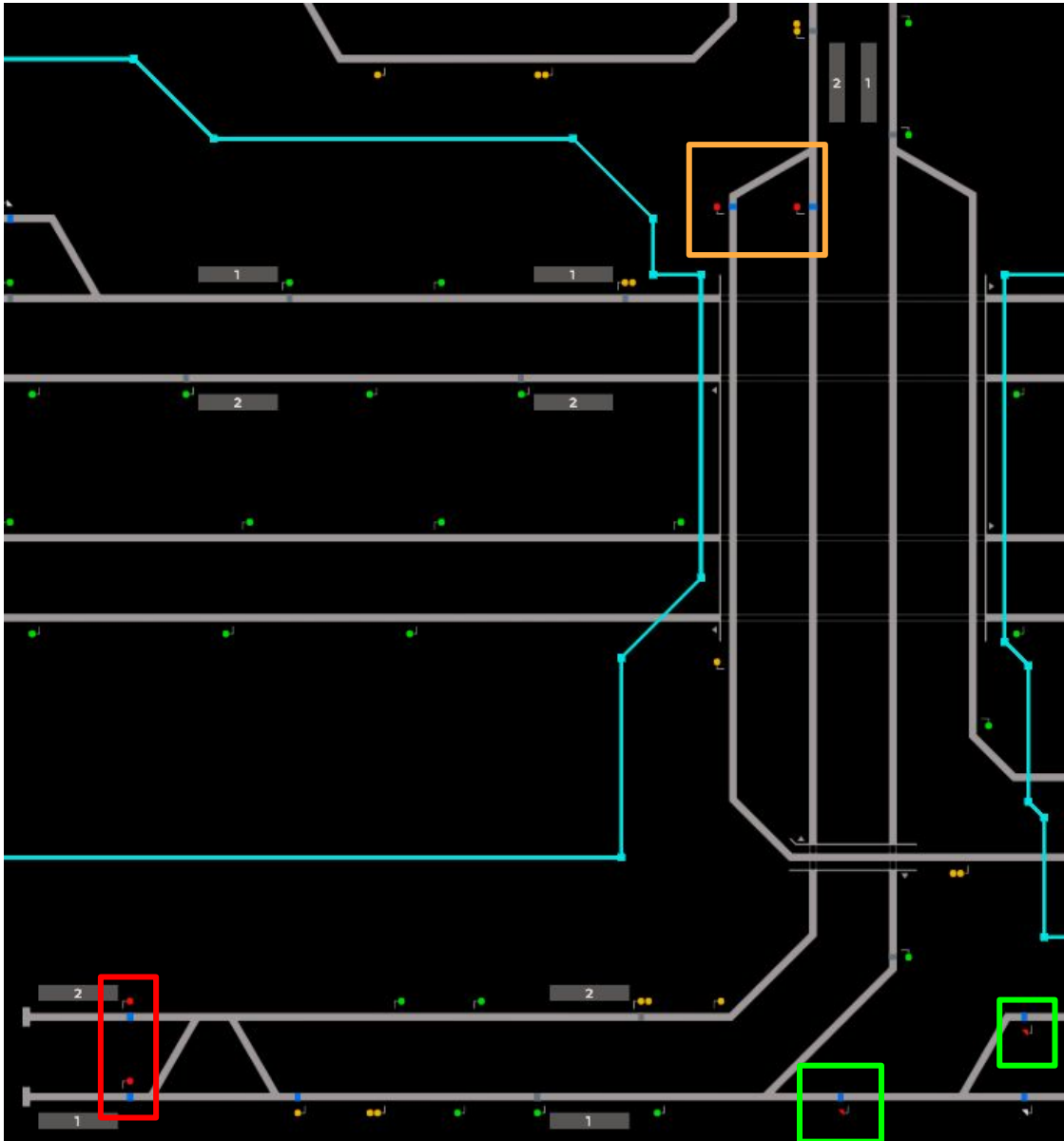
Section 3 –Cambridge Street Parkway to Connolly and Junction for Airport West



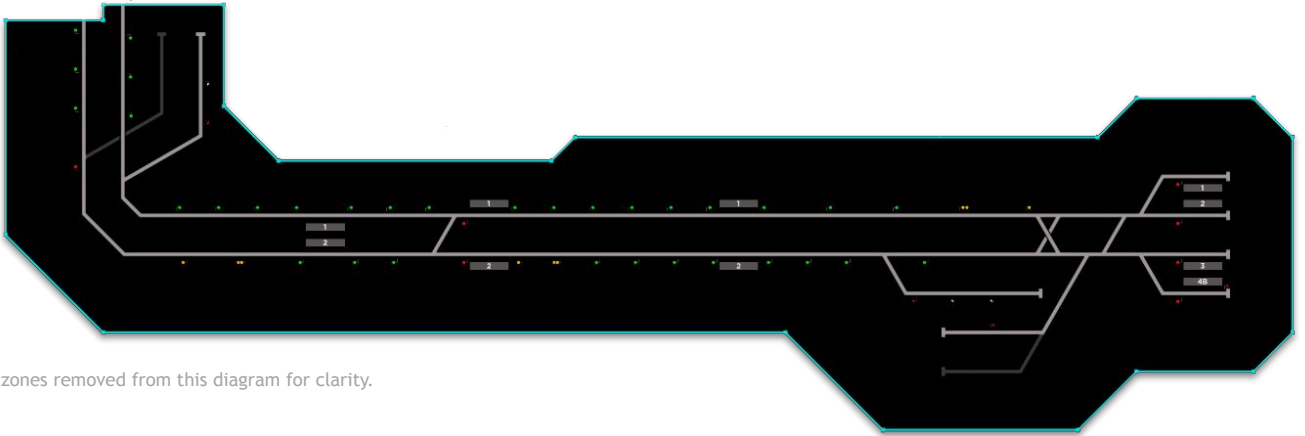
1. Set **Connolly station signals** to Danger.
2. Set **Ashlan Park Platform 2** to Danger.
3. Set these **signals at Cambridge Street Parkway** to Danger.



Section 4 – Morganstown Docks <> Greenslade



1. Set **these signals at Morganstown Docks** to Danger.
2. Set **these signals at Whitney Green Depot** to Danger.
3. Set the **starter signals at Greenslade** to Danger.



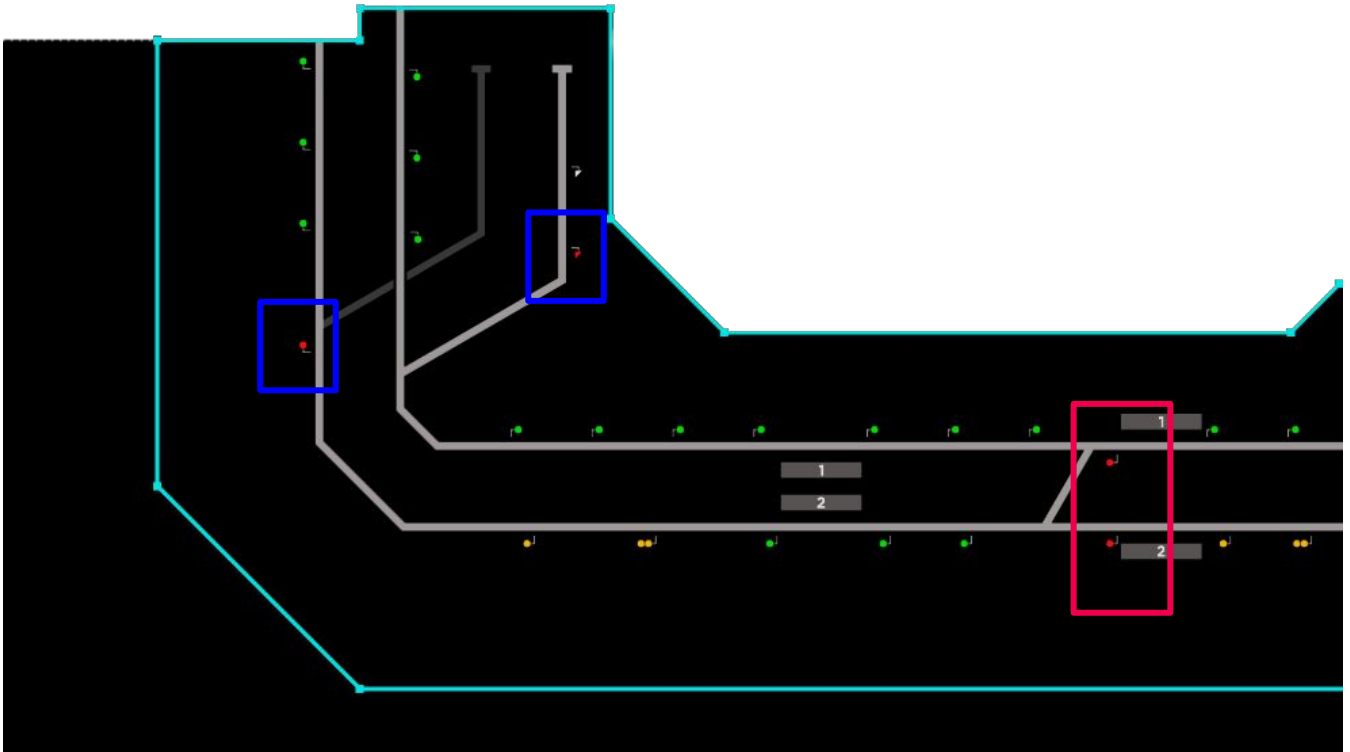
Other zones removed from this diagram for clarity.

Zone G controls the Esterfield line of Waterline from Farleigh Depot (Road 2) to Esterfield station and is split into 2 sections:

- **Farleigh Depot (Road 2) to Farleigh**
- **Rosedale Village to Esterfield**



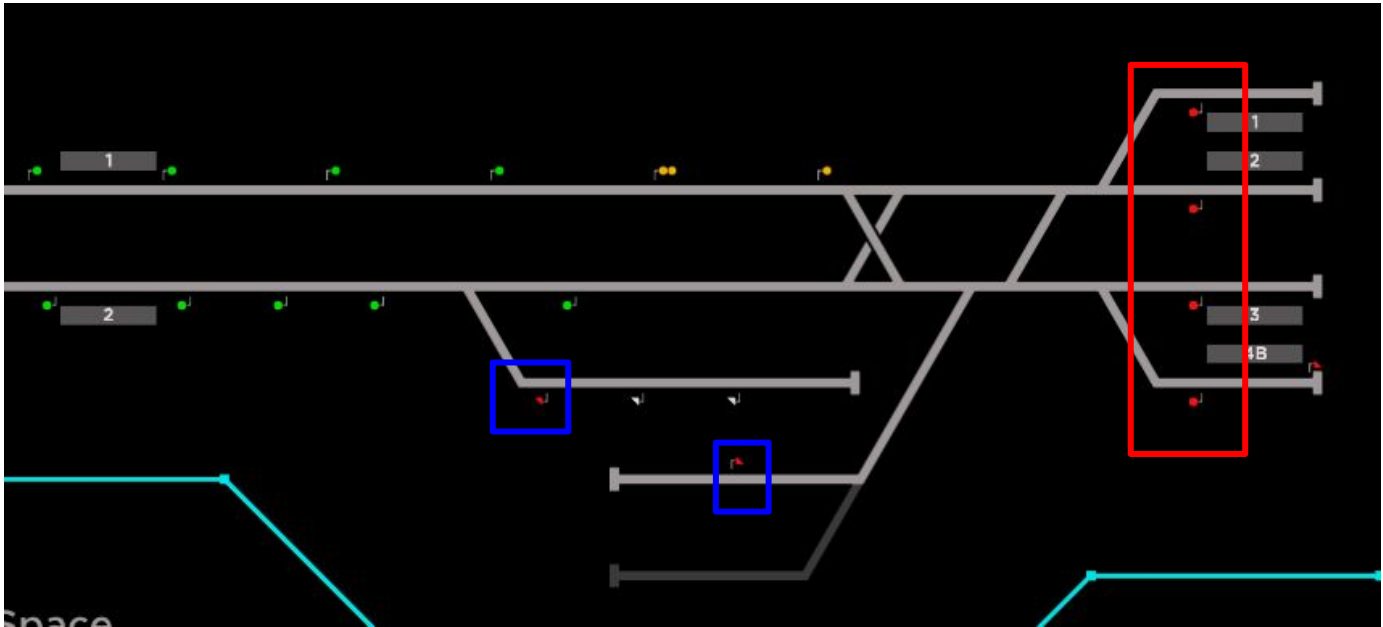
Section 1 – Farleigh Depot (Road 2) to Farleigh



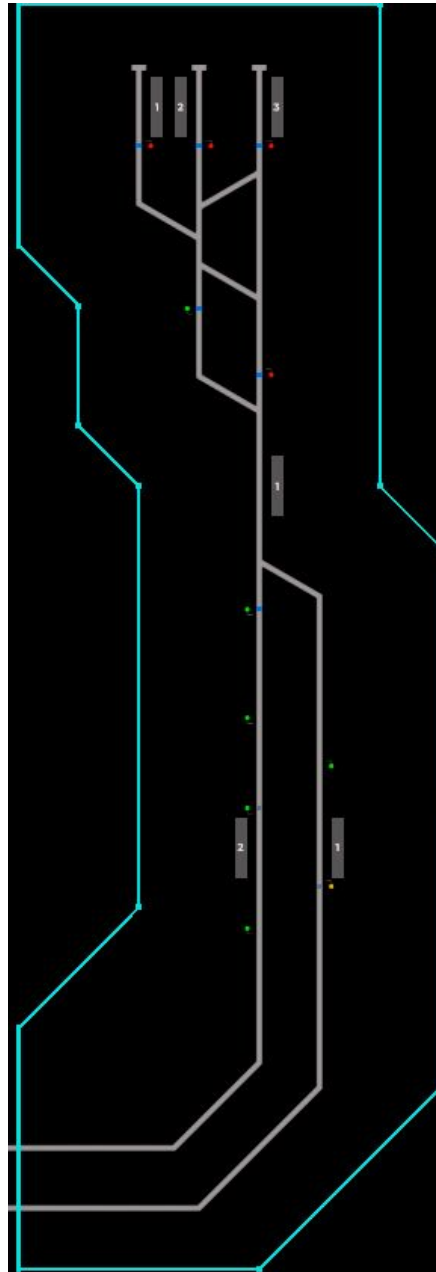
1. Set **Farleigh Depot (Road 2) and the depot branch** signal to Danger.
2. Set **Farleigh Platforms towards James Street** to Danger.



Section 2 – Rosedale Village to Esterfield



1. Set the **Esterfield Depot signals** to Danger.
2. Set **Esterfield Platforms** to Danger.



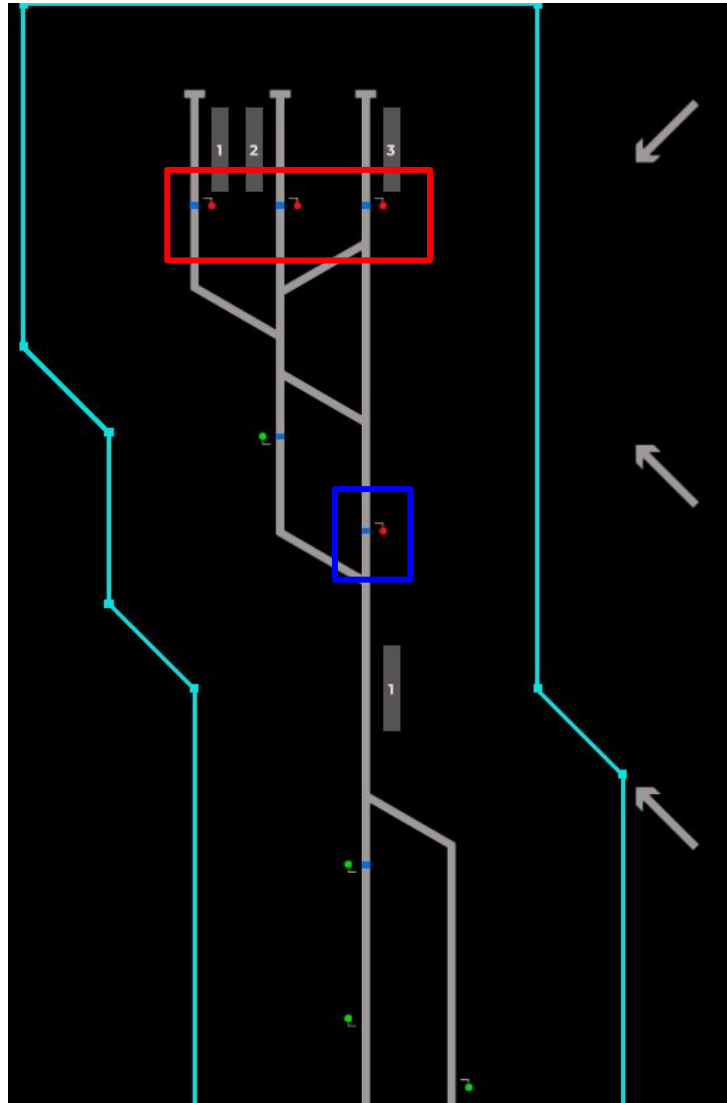
Other zones removed from this diagram for clarity.

Zone H contains the Rayleigh Bay branch has the section after Edgemed Junction to the terminus at Rayleigh Bay. This branch is signalled by semaphore signals with one controllable area.

- **Carnalea Bridge to Rayleigh Bay**



Carnalea Bridge to Rayleigh Bay



1. Set the **Platform Signals** at Rayleigh Bay to Danger.
2. Set the signal before the single track section **facing Edgemoad** to Danger.
3. Due to no signals at the platform at Carnalea Bridge, headcodes will not show next to the platform even if the train is stopped at the platform.
4. Aslockby does not require signal changes.



Zone	Coverage	Base Points min/hour	Points Multiplier	Base XP min/hour	Rate XP Multiplier
A	Stepford City Zone Whitefield	3/180	1	1/60	0.5
B	St. Helens <> Coxly Beaulieu Park	2/120	0.5	1/60	0.5
C	Stepford Airport Area (inc. Airport West)	3/180	0.75	1/60	0.5
D	Morganstown <> L.. West (inc Airport Parkway Depot)	3/180	0.75	1/60	0.5
E	Edgemead <> LBTS	3/180	0.75	1/60	0.5
F	Benton & WL (excl. MGT, AW <> Esterfield)	3/180	1	1/60	0.5
G	James Street <> Esterfield	1/60	0.5	1/60	0.5
H	Rayleigh Bay Branch	1/60	0.5	1/60	0.5

How points are calculated per minute:

Base Points + # of Trains in Zone x Rate Points Multiplier

How experience are calculated per minute:

Base XP + # of Trains in Zone x Rate XP Multiplier



Route No.	Route	Headcodes	Stop Type
R001	Stepford Central ↔ Airport Central	2Sxx/2Axx	All
R002	Stepford Central ↔ Port Benton	2Sxx/2Pxx	All
R003	Stepford Central ↔ Leighton City	2Sxx/2Txx	All
R004	St Helens Bridge ↔ Edgemean	1lxx/1Exx	Most
R005	Stepford Victoria ↔ Airport Central	1Vxx/1Axx	Most
R006	Stepford Victoria ↔ Port Benton	2Vxx/2Pxx	All
R007	Stepford Central ↔ Morganstown	1Sxx/1Mxx	Most
R008	Stepford Victoria ↔ Berrily	1Vxx/1Yxx	Most
R009	Stepford Victoria ↔ Edgemean	gVxx/gExx	Most
R020	Stepford Central ↔ Whitefield	2Sxx/2Fxx	All
R021	Stepford Central ↔ Stepford UFC	2Sxx/2Uxx	All
R022	Beechley ↔ Whitefield	1Cxx/1Fxx	Most
R023	Stepford Victoria ↔ Stepford UFC	2Vxx/2Uxx	All
R024	Stepford Central ↔ Llyn-by-the-Sea	2Lxx/2Sxx	Most
R025	St Helens Bridge ↔ Westwyvern	1Wxx/1lxx	All
R026	Stepford Victoria ↔ Llyn-by-the-Sea	gVxx/gLxx	Most



Route No.	Route	Headcodes	Stop Type
R027	Stepford Central ↔ Berrily	2Sxx/2Yxx	All
R028	Stepford Victoria ↔ Willowfield	2Vxx/2Dxx	All
R029	Stepford Victoria ↔ Beechley	2Vxx/2Cxx	All
R030	Willowfield ↔ Berrily	2Dxx/2Yxx	Most
R031	Willowfield ↔ Stepford UFC	2Dxx/2Uxx	All
R032	Willowfield ↔ Port Benton	1Dxx/1Pxx	Most
R033	Beechley ↔ Airport Central	2Cxx/2Axx	All
R034	Beechley ↔ Morganstown	2Cxx/2Mxx	Most
R035	Willowfield ↔ Westwyvern	1Dxx/1Wxx	Most
R036	Willowfield ↔ Llyn-by-the-Sea	9Dxx/9Lxx	Most
R037	Leighton City ↔ Llyn-by-the-Sea	1Txx/1Lxx	Most
R038	Leighton City ↔ Westwyvern	2Txx/2Wxx	All
R039	Benton ↔ Leighton City	2Bxx/2Txx	All
R040	Edgemead ↔ Llyn-by-the-Sea	2Exx/2Lxx	All
R041	Leighton West ↔ Edgemead	2Kxx/2Exx	Shuttle
R042	Leighton West ↔ Llyn-by-the-Sea	2Kxx/2Lxx	Most



Route No.	Route	Headcodes	Stop Type
R043	Leighton West ↔ Leighton City	2Kxx/2Txx	Shuttle
R044	Benton ↔ Leighton West	2Bxx/2Kxx	All
R045	Stepford Victoria ↔ Leighton City	2Vxx/2Txx	All
R046	Stepford Victoria ↔ Terminal 2	2Vxx/2Xxx	Most
R047	St Helens Bridge ↔ Port Benton	2lxx/2Pxx	All
R048	St Helens Bridge ↔ Terminal 2	2lxx/2Xxx	Most
R049	Rayleigh Bay ↔ Edgemoad	2Rxx/2Exx	All
R050	Rayleigh Bay ↔ Llyn-by-the-sea	2Rxx/2Lxx	All
R100	Rayleigh Bay ↔ Leighton West Via Edgemoad	2Rxx/2Kxx	All
R101	Rayleigh Bay ↔ Leighton City Via Edgemoad	2Rxx/2Txx	All



Route No.		Route		Headcodes	Stop Type
R010	Newry	↔	Greenslade	2Nxx/2Gxx	All
R011	Newry	↔	Connolly	2Nxx/2Oxx	All
R012	Newry Harbour	↔	Connolly	2Hxx/2Oxx	All
R013	Benton	↔	Greenslade	2Bxx/2Gxx	All
R014	Newry	↔	Esterfield	2Nxx/2Qxx	Most
R015	Benton	↔	Morganstown	2Bxx/2Mxx	All
R016	Benton	↔	Esterfield	2Bxx/2Qxx	All
R017	Newry	↔	Terminal 2	2Nxx/2Xxx	All
R018	Newry Harbour	↔	Farleigh	2Hxx/2Jxx	All
R019	Benton	↔	Connolly	2Bxx/2Oxx	All
R120	Newry Harbour	↔	Morganstown	2Hxx/2Mxx	All



Route No.	Route	Headcodes	Stop Type
R051	Stepford Central ↔ Airport Central (E)	gSxx/gAxx	Direct
R052	Stepford Central ↔ Airport Terminals (E)	gSxx/gXxx	Limited
R053	Stepford Central ↔ Airport Terminals (S)	1Sxx/1Xxx	Limited
R054	Stepford Central ↔ Airport Central (S)	1Sxx/1Axx	Limited
R055	Stepford Central ↔ Terminal 3 (via 2)	1Sxx/1Zxx	Limited
R056	Airport Central ↔ L. Stepford Rd	1Axx/1Rxx	Limited
R057	Terminal 3 ↔ L. Stepford Rd	gZxx/gRxx	Limited
R058	Stepford Central ↔ Terminal 3 (via 1)	1Sxx/1Zxx	Limited
R059	Stepford Central ↔ Terminal 2	1Sxx/1Xxx	Limited
R060	Airport Parkway ↔ Terminal 2	gPxx/gXxx	All



Route No.	Route	Headcodes	Stop Type
R075	Stepford Central ↔ Benton (Fast)	gSxx/gBxx	Direct
R076	Stepford Central ↔ Leighton City	1Sxx/1Txx	Limited
R077	Stepford Central ↔ Llyn (via Benton)	1Sxx/1Lxx	Limited
R078	Stepford Central ↔ Llyn (via Ben. Fast)	gSxx/gLxx	Limited
R079	Stepford Central ↔ Benton	1Sxx/1Bxx	Limited
R080	Stepford Central ↔ Llyn (via Mgt. Fast)	gSxx/gLxx	Limited
R081	Stepford Central ↔ Llyn (Super Fast)	gSxx/gLxx	Direct
R082	Stepford Central ↔ Westwyvern	gSxx/gWxx	Limited
R083	Newry ↔ Llyn-by-the-Sea	gNxx/gLxx	Limited
R084	Newry Harbour ↔ Llyn-by-the-Sea	gHxx/gLxx	Limited
R085	Benton ↔ Llyn-by-the-Sea	gBxx/gLxx	Limited
R086	Newry ↔ Leighton City	gNxx/gTxx	Limited
R087	Rayleigh Bay ↔ Llyn-by-the-sea	1Rxx/1Lxx	Limited



SCR

Driver Handbook

[Click Here](#)

Dispatcher Handbook

[Click Here](#)

Guard Handbook

[Click Here](#)

Signaller Ops Guide

[Check Folder](#)

Points/XP Chart

[Click Here](#)